

G-CEM ONE™

Universal Self-adhesive Resin Cement

Simply The ONE



Since 1921
100 years of Quality in Dental



The ONE... that Simplifies!

G-CEM ONE™ is a truly universal self-adhesive resin cement for all indications and all types of restorations. Depending on the preparation, you could choose from either a simplified self-adhesive cementation or full adhesive application.

In case of a full adhesive application, **G-CEM ONE™** offers two simple options:



G-CEM ONE™ Adhesive Enhancing Primer

Take advantage of a unique Touch Cure technology.

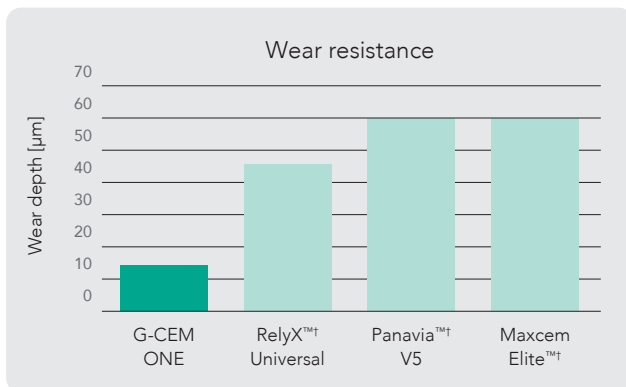
OR



G-Premio BOND™

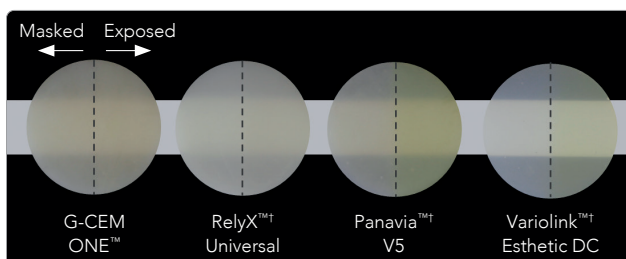
Only one bonding agent for all direct & indirect workflows.

Invisible margins for esthetic outcome



Source: Prof. Mark Latta, USA, Data on file.

G-CEM ONE's homogenous distribution of small fillers provide invisible and wear-resistant margins, especially important for CAD/CAM inlays, onlays and partial crowns.



12 hours after immersion in red wine (left side was masked, right side was exposed in red wine).
Source: GC R&D, Data on file.

G-CEM ONE's highly polymerized hydrophobic cement matrix with low water sorption results in long-term, color-stable esthetic results, making it an excellent choice for anterior restorations.

Touch Cure without Light

G-CEM ONE™ can be combined with the dedicated **Adhesive Enhancing Primer (AEP)**. This innovative primer induces what we call "Touch Cure" for an accelerated and effective dark-cure (self-cure) reaction of **G-CEM ONE™**.



Touch cure ensures safe and fast setting in any clinical situation where light access is limited.

Simple procedure

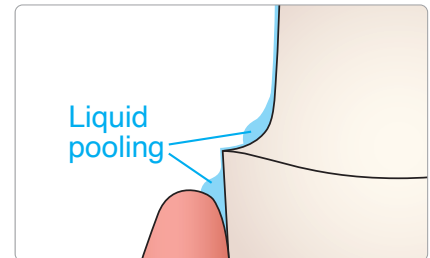
Just apply the **Adhesive Enhancing Primer**, wait 10 sec and air-dry.
No light-curing needed!



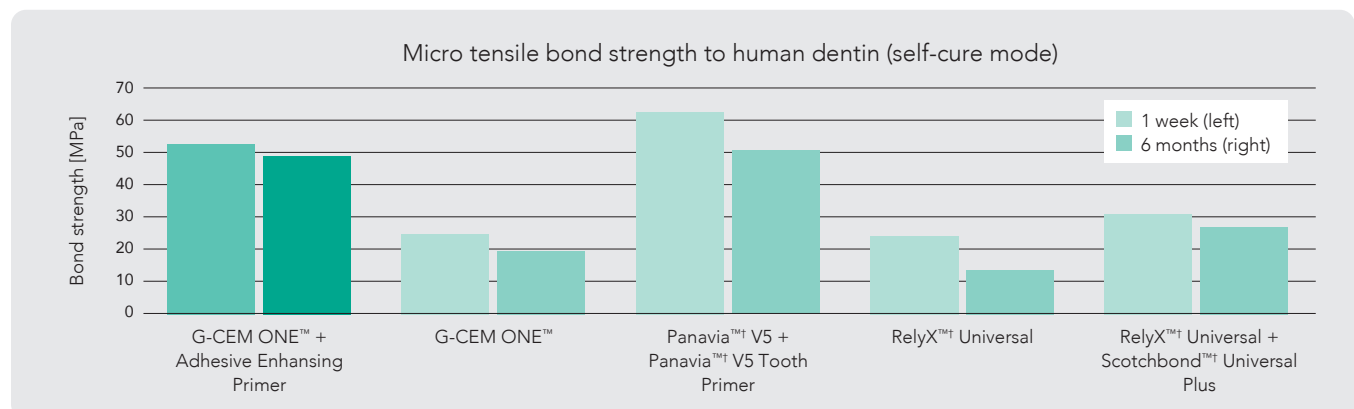
Apply G-CEM ONE™ AEP. Wait 10 seconds.



Dry with a **MAXIMUM AIR PRESSURE** for 5 seconds to prevent liquid pooling in the gingival sulcus.



Dark-cure bonding performance



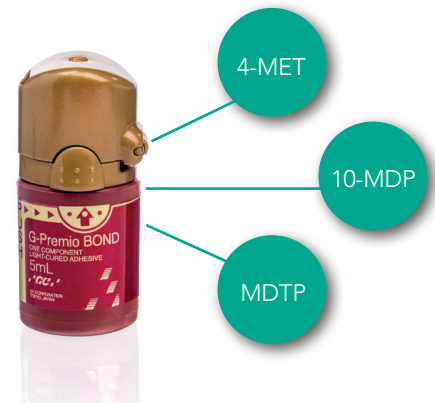
Source: Benjamin Mercelis, Kirsten Van Landuyt, Marleen Peumans, Bart Van Meerbeek, Short-Term and Aged Dentin-Bonding Effectiveness of Self-Cured Universal Composite Cements, PER-IADR Oral Health Research Congress 2022, P309.

Simplified Universal Bonding

G-CEM ONE™ can also be combined with the universal bonding agent **G-Premio BOND™** which includes three functional adhesive monomers (10-MDP, 4-MET, MDTP). Only one bonding agent for all direct and indirect workflows!

Simple procedure

Apply **G-Premio BOND™**, wait 10 sec, air-dry, light-cure for 10 seconds. Any etching technique (self-etch, selective-etch, total-etch) is possible.



Apply G-Premio BOND™. Wait 10 seconds.



Dry with MAXIMUM AIR PRESSURE for 5 seconds.



Light cure for 10 seconds (Halogen/LED 700 mW/cm²).

Award-winning bottle design

G-Premio BOND™ features an award-winning bottle design that allows for precise application. This unique bottle won the prestigious WPO WorldStar Packaging Awards in 2019 in the medical and Pharmaceutical category.



One Universal Bonding for all your workflows

✓ Direct bonding

✓ Repair cases

✓ Indirect luting

✓ Core build-up

✓ Hypersensitivity treatment



Clinical cases

One for all clinical scenarios

Self-adhesive cementation of anterior zirconia crowns
(Courtesy of Dr. Christian Lampson, Germany)



After tooth preparation.



Restoration cemented.

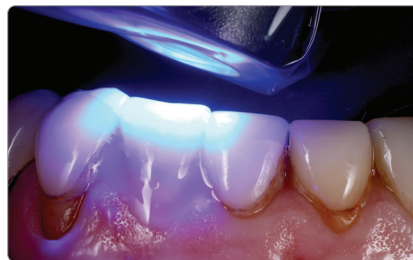


Final result.

Adhesive cementation of lithium disilicate veneer
(Courtesy of Dr. Miles Cone, USA)



Patient presented with a debonded veneer.



1-second tack cure.



Easy excess removal.

Adhesive cementation of posterior lithium disilicate table-top
(Courtesy of Dr. Riccardo Tempesta, Italy)



Initial situation.



Application of G-CEM ONE.



Final result.

Adhesive cementation of anterior lithium disilicate veneers
(Courtesy of Prof. Roberto Sorrentino, Italy)



After tooth preparation.



Veneers cemented with use of G-Premio BOND.



After 18 months.

G-CEM ONE™

Ordering information

SKU	Description
013670	G-CEM ONE™ Starter Kit A2
013671	G-CEM ONE™ Starter Kit Translucent
013672	G-CEM ONE™ System Kit
013673	G-CEM ONE™ Twin Refill A2
013674	G-CEM ONE™ Twin Refill Translucent
013675	G-CEM ONE™ Single Refill AO3
013676	G-CEM ONE™ Single Refill White Opaque
013642	G-CEM ONE™ Adhesive Enhancing Primer
10037117	G-CEM ONE™ Universal System Kit



G-CEM ONE™ System Kit

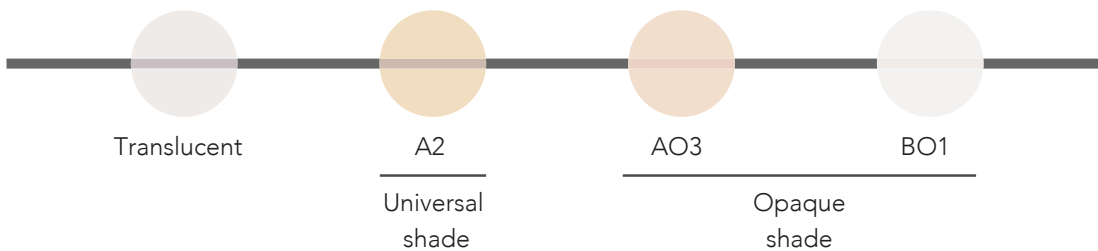


G-CEM ONE™ Starter Kit



G-CEM ONE™
Universal System Kit

Shade range



Related products



G-Multi PRIMER™
Universal Primer



GC Initial® LiSi Block
Lithium Disilicate
Glass Ceramic
CAD/CAM Block



GC TEMP ADVANTAGE®
Temporary Cement

GC America Inc.
3737 West 127th Street
Alsip, IL 60803
800.323.7063
www.gcamerica.com
© 2023 GC America Inc.