



# MADE TO FIT YOUR ADHESIVE CHALLENGES

**G-CEM LinkForce<sup>®</sup>**  
Dual-Cure Adhesive Luting Cement  
for All Substrates



## THE IMPORTANT FEATURES YOU ARE LOOKING FOR WHEN...



...achieving stability of crown and bridge placements **is an absolute must.**

- A **standardized procedure** for the most common cases.
- **Efficient bonding** not only on natural teeth but also on core build-ups and metal abutments.
- The **option to etch or not**, with virtually no post-operative sensitivity.
- A **universal primer** that bonds to all surfaces, from ceramics to precious metals.



...securing the **perfect veneer firmly in place.**

- **Easy positioning** and removal of any excess.
- **Efficient light-curing** of bonding and cement.
- A **shade assortment fitting all situations**, from discolored up to bleach preparations.
- A set of corresponding **try-in pastes** to confirm the shade selection.
- **Fluorescence** to contribute to the final aesthetic result.

...using with **CAD/CAM blocks and Lithium Disilicates**

- G-CEM LinkForce® is **the perfect cement to use** with milling blocks, including our CERASMART® family of blocks
- G-CEM LinkForce® **is also ideal for use** with our GC Initial® LiSi Press High Strength Lithium Disilicate and our GC Initial® Leucite-Reinforced Feldspar LRF Blocks



You can count on G-CEM LinkForce® for your clinical situations, for each indication and every kind of substrate!



...finding the **optimal solution for post luting.**

- The **possibility to etch dentin** in deep canals.
- **Perfect polymerization** of the bonding when mixed with the dual-cure activator in dark canals.
- Low viscosity for **perfect post insertion.**
- Excellent **self-cure mode** of the paste for long-lasting bond strength.



...ensuring inlays/onlays **stay right where you placed them.**

- A **strong hold**, even on non-retentive preparations.
- **Efficient curing**, even under opaque restorations.
- Marginal stability and **wear resistance** at occlusal margins.



# LOOKING FOR A STANDARDIZED LUTING SOLUTION?

**Different types of restorations ... Different types of substrates ...  
How about a solution that securely bonds each of them?**

From inlays/onlays and veneers to CAD/CAM prosthetics, the choice between different types of restorations has become wider. Add the introduction of new substrates such as zirconia, lithium disilicate and hybrid ceramics and it is no surprise that mastering all the cementation procedures for all indications can be a challenge.

**G-CEM LinkForce® is the universal solution that can adapt to ANY situation!**

Imagine a universal solution that offers predictable results and allows you to work in a standardized way. If this is what you are looking for, look no further. GC has developed for you a universal adhesive resin cement that ensures a strong bond to all substrates – in all indications, without compromises!

### One system, three base elements:

that's all it takes to create strong adhesion in all situations.

**G-Premio BOND™**  
bonds with  
no compromises to  
**ANY preparation**



**G-CEM LinkForce®**  
provides a  
strong link in  
**ANY indication**

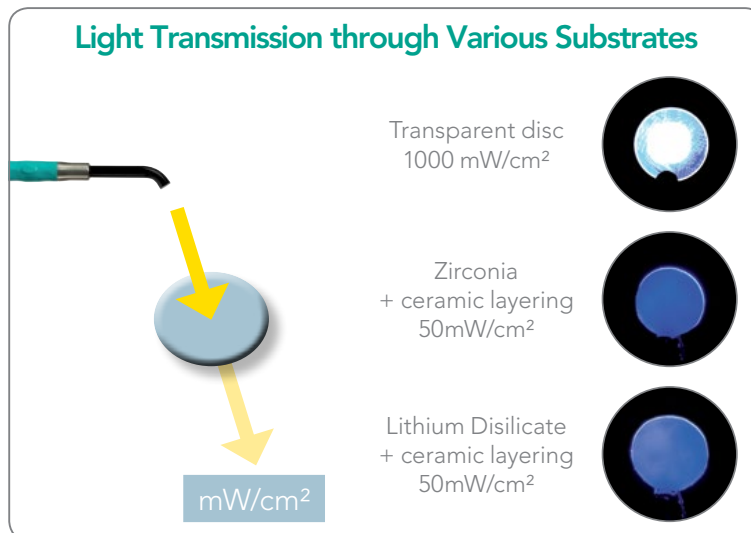


**G-Multi PRIMER™**  
ensures a stable  
adhesion to  
**ANY restoration**



**G-CEM LinkForce®'s excellent self-curing capability** secures your adhesion at all times

Did you know that depending on the type of prosthetic material, only a small percentage of the light is transmitted through your restorations? Since it is difficult to rely completely on light activation, G-CEM LinkForce® has been designed to offer perfect adhesion, even in self-cure mode.



Source: Pereira et al., Sao Paulo University, Brazil. Data on file



# A PERFORMANCE YOU CAN TRUST...

## G-Premio BOND™

Bonding with no compromises to ANY preparation

Pictures courtesy of Dr V. Nita, Romania



### Bonding to any preparation

Even when the preparation involves a composite core build-up or metal abutment, the three functional monomers contained in G-Premio BOND™ will ensure reliable adhesion.



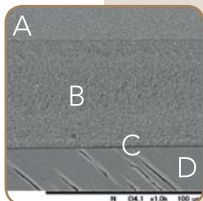
### Three choices of etching mode

G-Premio BOND™ can be used in all etching modes (self-etch, selective etch and total-etch) with virtually no post-operative sensitivity.



### Easy bonding application

Thanks to its viscosity and wettability, a thorough application of G-Premio BOND™ is easy to achieve.



### Clear drying procedure and 3µm film thickness

With five-second drying at maximum air pressure a minimal film thickness of 3µm is achieved, which guarantees perfect adaptation of the prosthesis.

SEM picture of CERASMART® restoration (A) bonded to dentin (D) using G-Premio BOND™ (C) and G-CEM LinkForce® (B)  
Source: GC R&D, Japan



### The choice between light-curing the bonding - or not

**Light-curing** the bonding ensures immediate control of the polymerization and reduces the number of procedural steps.

**Dual-curing** (when mixed with G-Premio BOND™ DCA) ensures reliable polymerization of the bonding layer, for instance in case of post luting.



**4-MET**

adhesion to enamel and dentin

**MDP**

adhesion to enamel, dentin, resin & non-precious metal core

**MDTP**

adhesion to precious metals



## G-Multi PRIMER™

Ensuring a stable bond to ANY restoration



### One primer for all substrates

G-Multi PRIMER™ uses three different chemical agents to ensure perfect adhesion in all situations.

By adding silane to the primer and not to the bonding, stability of the adhesion is assured.



**Silane**

adhesion to glass ceramics, hybrid ceramics and composites

**MDP**

adhesion to zirconia, alumina and non-precious metals

**MDTP**

adhesion to precious metals



# ...AT EACH STEP OF THE LUTING PROCEDURE

## G-CEM LinkForce® Providing a strong link in ANY indication



Pictures courtesy of Dr.V. Nita, Romania



### The right shade for each use

After selecting from the four available shades, you will appreciate the easy automix dispensing directly into the restoration or with an endo tip in the root canal.



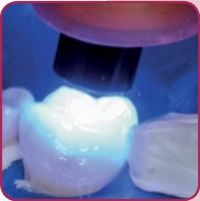
### Seating and ensuring a perfect adaptation

Optimum wettability and viscosity ensure that the luting paste is well spread. Its film thickness of 4µm further guarantees the adaptation of the prosthetic piece onto the abutment.



### Convenient excess removal

The ability to tack-cure any excess for 1-2 seconds makes excess removal easier.



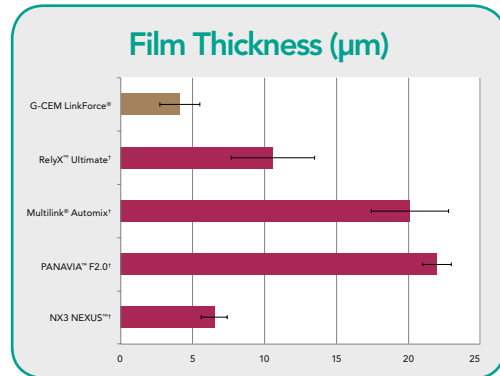
### Efficient polymerization in self-cure and light-cure modes

Thanks to a perfect ratio of initiators, polymerization is assured, even when the light cannot pass through the restoration.



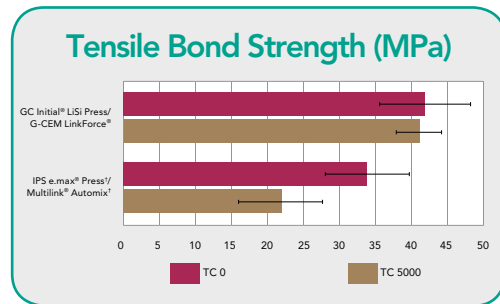
### High polishability and wear resistance

The use of ultra-fine homogeneously dispersed fillers in high concentration delivers outstanding wear resistance, even when margins are located on occlusal surfaces.



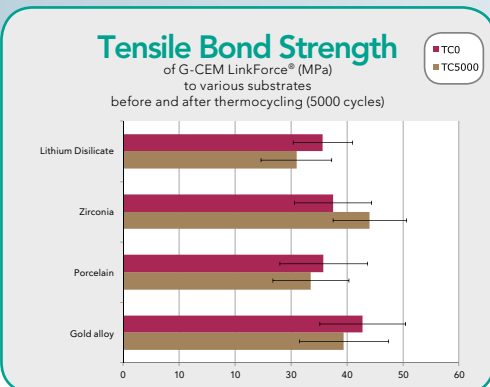
Source: GC R&D, Japan, 2015

† RelyX is a trademark of 3M. Multilink is a registered trademark of Ivoclar Vivadent AG. PANAVIA is a trademark of Kuraray America, Inc. NX3 NEXUS is a trademark of Kerr Corporation.



Source: GC R&D, Japan, 2015

† IPS e.max and Multilink are registered trademarks of Ivoclar Vivadent AG.



Source: GC R&D, Japan, 2015

GC used its long-term knowledge in the field of primers to develop G-Multi PRIMER™. It offers not only strong adhesion to all substrates (even precious alloys), but also stable adhesion over time.



# STRONG & UNIVERSAL ADHESIVE CEMENT AT YOUR FINGERTIPS

Four different shades and their corresponding Try-in Pastes to cover all your aesthetic needs!



### Translucent

(clear translucent)  
Perfect for very thin restorations to preserve the original shade



### A2

(A2 translucent)  
The standard for luting most of your prosthetic pieces



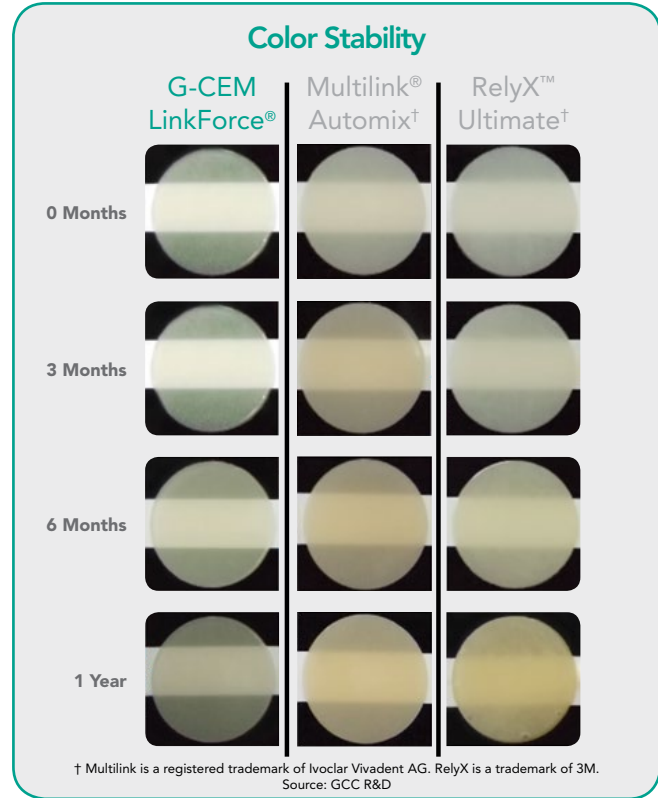
### Opaque

(universal opaque)  
Used to mask discolored substrates when needed



### Bleach

(bleach opaque)  
Adapted for ultra-white restorations to increase opacity and value



#### 009541 G-CEM LinkForce® System Kit

Contains: 3 G-CEM LinkForce® cement syringes (1 each of: A2, Translucent and Opaque; 8.7 g/5 mL each), 45 GC Automix Tips, 5 GC Automix Endo Tip mixing tips with intraoral tip, 1 bottle G-Premio BOND™ (5 mL), 1 bottle G-Multi PRIMER™ (5 mL), 1 bottle G-Premio BOND™ Dual Cure Activator (3 mL), 1 syringe GC ETCHANT (3.6 mL; available in System Kit only), 25 Metal dispensing tips + 2 covers (for GC ETCHANT & Try-in Paste), 3 syringes G-CEM® Try-in Paste (A2, Translucent and Opaque; 1.5 g each), 50 disposable applicators and 20 disposable dispensing dishes.

#### G-CEM LinkForce® Starter Kit

Contains: 1 G-CEM LinkForce® cement syringe (8.7 g/5 mL), 1 bottle G-Premio BOND™ (5 mL), 1 bottle G-Multi PRIMER™ (5 mL), 20 GC Automix Tips, 50 disposable applicators and 20 disposable dispensing dishes.

010118 A2      010119 Translucent

#### G-CEM LinkForce® Cement Refills

Contains: 1 syringe (8.7 g/5 mL) and 20 GC Automix Tips.  
010120 A2      010122 Opaque      010123 Bleach  
010121 Translucent

#### G-CEM® Try-In Paste Refills

Contains: 1 syringe (1.5 g/1.2 mL), 3 dispensing tips (metal type) and 1 tip cover.  
012803 A2      012805 Opaque      012806 Bleach  
012804 Translucent

#### 012691 G-Premio BOND™ Kit

Contains: 1 bottle (5 mL), 50 disposable applicators and 20 disposable dispensing dishes.

#### 009276 G-Premio BOND™ Unit Dose

Contains: 50 unit doses (0.1 mL) and 50 disposable applicators (fine).

#### 012696 G-Premio BOND™ Bottle

Contains: 1 bottle (5 mL).

#### 009553 G-Multi PRIMER™ Bottle

Contains: 1 bottle (5 mL).

#### 009552 G-Premio BOND™ Dual Cure Activator (DCA)

Contains: 1 bottle (3 mL).

#### 002902 GC Automix Tips

Contains: 20 tips.

#### 002903 GC Automix Tips for Endo

Contains: 10 tips and 10 extension tips.

#### 001926 Flo/LoFlo Metal Dispensing Tips

Contains: 20 Metal Dispensing Tips for G-CEM® Try-In Paste or GC Etchant.