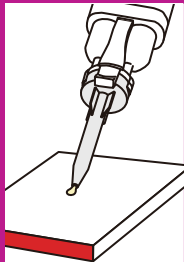


*Precautions for automix



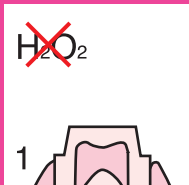
Before applying mixing tip, check the two openings of the cartridge or bleed small amount of pastes to ensure even flow from the cartridge.

AND



Bleed small amount of the mixed paste on a pad before dispensing the material into the appliances.

GC FujiCEM™ 2 APPLICATION TECHNIQUE



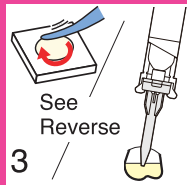
1 Prepare tooth in usual manner. See instructions when using a desensitizer or cleaning agent.



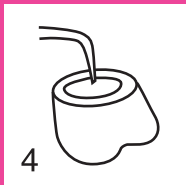
Consult Instructions for Use



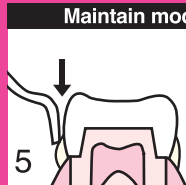
2 Clean the prepared tooth with pumice and water, rinse and remove excess moisture. Do not desiccate.



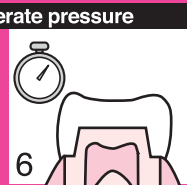
3 *See precautions
Dispense material on the mixing pad and mix thoroughly for 10 sec. or dispense material directly into the restoration using GC FujiCEM Mixing Tip SL.



4 Coat internal surface of the restoration and seat gently.



5 Start removing excess cement when the excess cement feels rubbery.



6 Maintain moderate pressure. Finishing can be started **4 min. 30 sec.** after seating the restoration.

STORAGE

Recommended for optimal performance, store at room temperature away from heat, moisture and direct sunlight (4-25°C / 39.2-77.0°F).

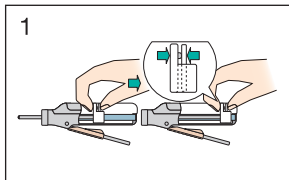


GC America Inc.
Alsip, IL 60803

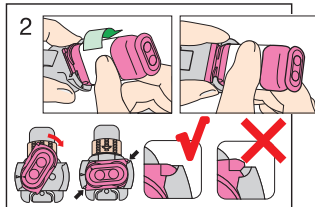
© 2015 GC America Inc.

1500215

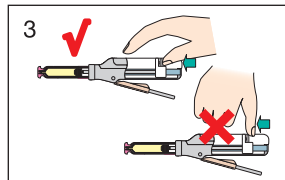
Paste Pak CARTRIDGE SL LOADING AND DISPENSING



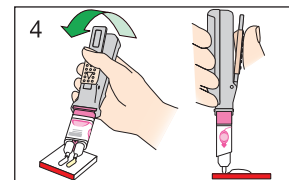
1. Retract piston completely into Dispenser.



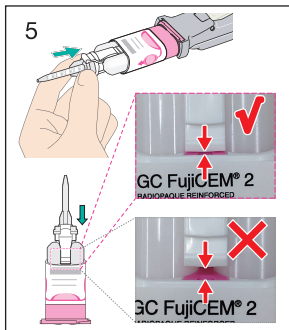
2. Turn cartridge fully to the right position.



3. Slide piston release forward until it stops. Remove cartridge cover.

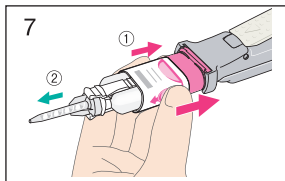
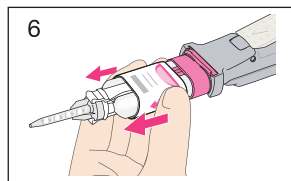


4. Before dispensing the first time or after a long interval, bleed the pastes from the cartridge.

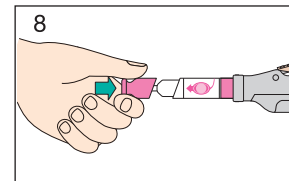


5. Attach the mixing tip on the cartridge. Push the mixing tip completely until the end.

6. Hold the side of sleeve and slide it forward to **LOCK** the mixing tip.



7. After dispensing, slide the sleeve backward(1) and remove mixing tip.(2)



8. Always put the cover back on.