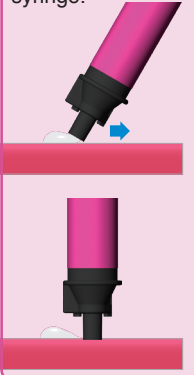


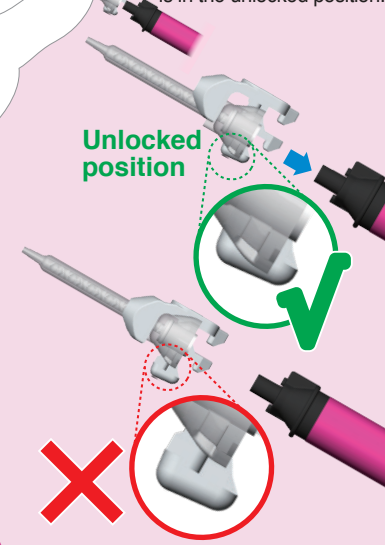
GC Push and Click Tip Installation



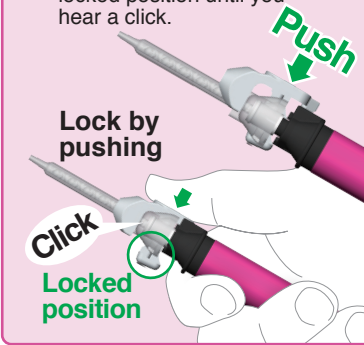
1 Before placing mixing tip, check the two openings of the syringe to ensure that the pastes are at same level or bleed a small amount of pastes to ensure even flow from the syringe.



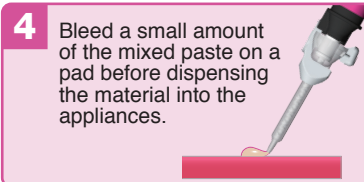
2 Before attaching the GC Push and Click Tip, confirm that the lock unit is in the unlocked position.



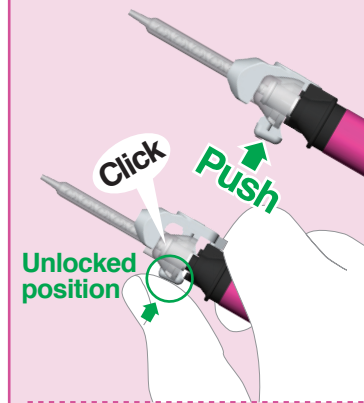
3 Place GC Push and Click Tip lightly on the syringe nozzle and push the lock unit down to the locked position until you hear a click.



4 Bleed a small amount of the mixed paste on a pad before dispensing the material into the appliances.



5 To remove the GC Push and Click Tip, push the lock unit to the unlocked position.



Store with cap securely attached to the syringe.

GC FujiCEM™ Evolve Cementation Technique Guide



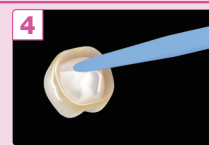
1 Prepare tooth in usual manner. Refer to the instructions regarding the use of a desensitizer or cleaning agent.



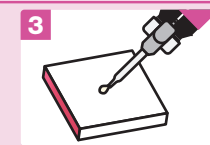
2 Clean the prepared tooth with pumice and water, rinse and remove excess moisture. Do not desiccate.



3 Dispense the required amount of paste on a mixing pad and mix thoroughly for 10 sec.



4 Coat the internal surface of the restoration. Working time is 2 min 15 sec.



3 Carefully attach the GC Push and Click Tip and discard the initial mix.



4 Extrude the material directly into the restoration. Working time is 2 min 15 sec.

Handmix

Automix



5 Place the restoration on the prepared tooth. Maintain moderate pressure.



6 Optionally, excess can be tack-cured for 3 sec.



Remove excess with an instrument, once the cement reaches a rubbery consistency.



7 Maintain moderate pressure. Proceed with occlusion check and finish the restoration 4 min 30 sec after seating.

Consult Instructions for Use

4149144
270202SK