



initial[®]
IQ ONE SQIN

Paintable
color-and-form
ceramic system

,'GC,'

Most restorations are prescribed in a key shade ...

For some time now, it has been possible to make posterior restorations from a single material such as lithium disilicate or zirconia, which are sufficiently aesthetic without laborious layering techniques. Monolithic work is increasing.

With **GC Initial® IQ ONE SQIN** - the paintable color-and-form ceramic system - aesthetically appealing restorations suitable for the anterior region, can be achieved in the same simple way. Based on the GC Initial® "IQ philosophy," the system consists of different ceramic materials that are perfectly adapted to be used together, assuring an efficient and aesthetically convincing finalization of monolithic and buccally reduced restorations.



GC Initial® IQ
Lustre Pastes ONE

The most versatile paintable ceramic for external staining, as well as internal characterization of substructures. When used with SQIN, it also serves as the connection firing.

- ✓ Ready-to-use consistency
- ✓ Inherent fluorescence
- ✓ 3D color depth

GC Initial® IQ
SQIN

Completes the final contour of your restorations, offering vitality, texture, and natural gloss.

- ✓ Easy form and texture
- ✓ Self-glazing effect
- ✓ 3D surface structure



GC Initial® IQ
Spectrum Stains

Fine powder stains for extra individual effects.

- ✓ Infinite color nuances
- ✓ Can be mixed with Lustre Pastes ONE or SQIN

With **GC Initial® IQ ONE SQIN** - the paintable color-and-form ceramic system - you can quickly and easily achieve high aesthetic results, comparable to conventionally layered restorations but with significant time savings.



How does it work? You choose ...

Micro-layering technique (micro-buccally reduced monolithics)

GC Initial® IQ Lustre Pastes ONE are used as a color and individualization layer, assuring a perfect connection firing before application of the SQIN powders. In the micro-layering technique, SQIN is easily applied in a layer thickness of 0.1 – 0.6 mm over the painted and fired Lustre Pastes ONE surface. Thanks to the refined mixture of feldspar-based glasses, a lifelike 3D-effect is created, resulting in color depth and lifelike translucency. Mixed with the Form and Texture liquid, the SQIN powders become a highly compact and dense ceramic slurry. Their unique application and modelling properties will facilitate individual surface texturing with self-glazing properties after ceramic firing.

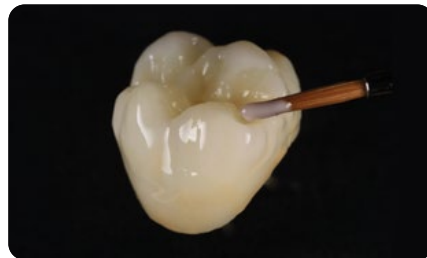
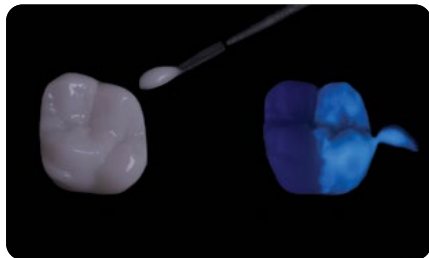


... what you paint is what you get!

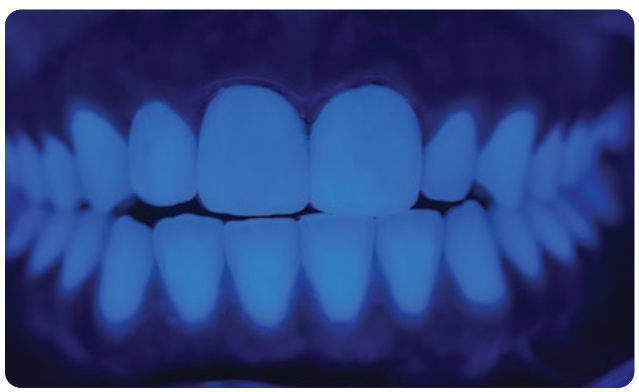
Painting technique (monolithics)

Available in a ready-to-use consistency, the GC Initial® IQ Lustre Pastes ONE feldspar-based 3D paint-on ceramic adds color depth and lifelike translucency with a very natural glaze to your monolithic restorations.

The pastes can be applied in a thicker layer, guaranteeing unsurpassed vitality and a beautiful natural glaze. With their inherent fluorescence, they are fine-tuned to boost the fluorescence of your monolithic restorations, especially when using the Lustre Pastes ONE Neutral FLUO (L-NFL).



Beauty within



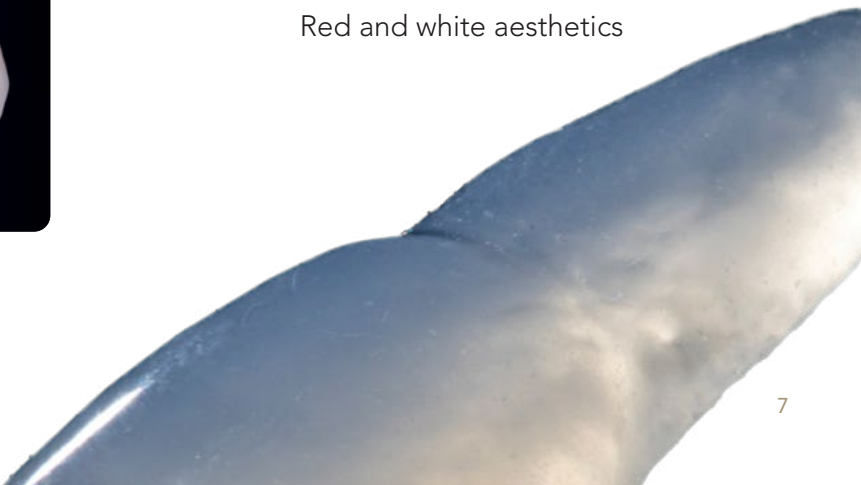
Natural fluorescence



Red and white aesthetics



Maximal aesthetics within a micro-layer



Easy and time-saving



Create form and fine texture in the wet stage.
No changes after firing.

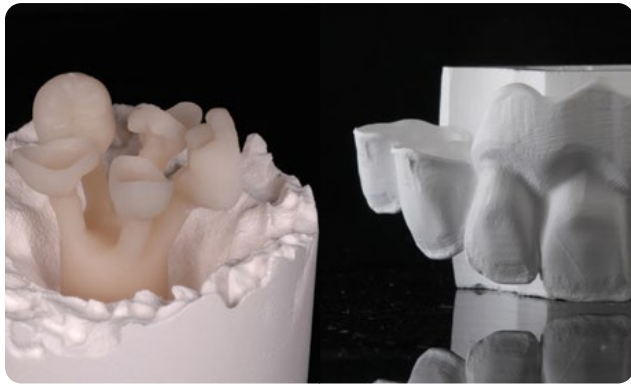


GC Initial® IQ Lustre Pastes ONE also serve as connection firing.



Self-glazing properties. Get a beautiful glazed
finish in one single firing.

One system ...



... for all your Zr and LDS full ceramic realizations



... for micro-layering as well as painting techniques



... for anterior and posterior restorations



GC Initial® IQ ONE SQIN System

ONE SQIN System Set to easily achieve high aesthetic results, comparable to conventionally layered restorations but with significant time savings, containing a selection of the major ceramic components.



GC Initial® IQ ONE SQIN SYSTEM SET

- 10x SPS Stain (SPS-1 / 2 / 7 / 8 / 13 / 14 / 17 / 18 / 19 / 20), 3g
- 1x SPS Glaze Fluo (GL-FLUO), 10g
- 1x SPS Glaze Liquid, 25ml
- 2x IQ LP ONE Lustre Paste Neutral (L-N / L-NFL), 4g
- 4x IQ LP ONE Lustre Body Shade (L-A / B / C / D), 4g
- 6x IQ LP ONE Enamel Effect Shade (L-3 / 6 / 8 / 9 / 10 / OP), 4g
- 1x IQ LP ONE/NF Diluting Liquid, 8ml
- 1x IQ LP ONE/NF Refresh Liquid, 8ml
- 5x IQ SQIN Powder Dentin (Body A / B / C / D / BL-D), 10g
- 5x IQ SQIN Powder Enamel (E-57 / 58 / 59 / 60 / BL-E), 10g
- 1x IQ SQIN Powder Translucent Opal Booster (TO), 10g
- 3x IQ SQIN Powder GUM (light, dark, neutral), 10g
- 1x IQ SQIN Form & Texture Liquid, 25ml
- 1x IQ LP ONE Mixing Dish
- 1x IQ LP ONE Brush 00
- 1x IQ LP ONE Brush 2
- 1x IQ LP ONE Plastic Cover
- 1x IQ ONE SQIN Technical Manual
- 1x IQ LP ONE Color Chart
- 1x SPS Color Chart



GC Initial® IQ SQIN SHADES SET

- 5x IQ SQIN Powder Dentin (Body A / B / C / D / BL-D), 10g
- 5x IQ SQIN Powder Enamel (E-57 / 58 / 59 / 60 / BL-E), 10g
- 1x IQ SQIN Powder Translucent Opal Booster (TO), 10g
- 3x IQ SQIN Powder GUM (light, dark, neutral), 10g
- 1x IQ SQIN Form & Texture Liquid, 25ml
- 1x IQ SQIN Technical Manual



GC Initial® IQ Lustre Pastes ONE - V-SHADES SET

- 2x IQ LP ONE Lustre Paste Neutral (L-N / L-NFL), 4g
- 4x IQ LP ONE Lustre Body Shade (L-A / B / C / D), 4g
- 10x IQ LP ONE Enamel Effect Shade (L-1 / L-2 / L-3 / L-4 / L-5 / L-6 / L-7 / L-8 / L-9 / L-10), 4g
- 1x IQ LP ONE Enamel Effect Opal (L-OP), 4g
- 1x IQ LP ONE Enamel Effect Value (L-V), 4g
- 1x IQ LP ONE/NF Diluting Liquid, 8ml
- 1x IQ LP ONE/NF Refreshing Liquid, 8ml
- 1x IQ LP ONE Mixing dish
- 1x IQ LP ONE Brush 00
- 1x IQ LP ONE Brush 2
- 1x IQ LP ONE Color Chart
- 1x IQ LP ONE Technical Manual



GC Initial® IQ ONW SQIN technique - for all your zirconia and lithium disilicate restorations

- ✓ Create form and fine texture details in the wet stage - No changes after firing.
- ✓ Self-glazing properties - Get a beautiful glazed finish in one single firing.
- ✓ Optimal fluorescence level - Ensures the look of natural teeth under all light circumstances.
- ✓ Maximum aesthetics within a micro-layer.



initial[®]
IQ ONE SQIN

GC



Since 1921
100 years of Quality in Dental