

Minimally Invasive Restorative Techniques Utilizing EQUIA™ Fil & EQUIA™ Coat



- Minimally Invasive prep design - shorten prep time and trauma, preserve healthy tooth structure
 - Self-adhesive - NO bonding steps required
- Moist field compatible - works in the most difficult environment
 - Sustained fluoride protection - long lasting restorations
 - High strength - great wear resistance
 - Excellent marginal integrity - no recurrent decay
 - Highly aesthetic - easy to achieve

Class II



Minimally invasive preparation design.
No bonding required.
Ready for direct application of EQUIA Fil.



EQUIA Fil injected into preparation.
Contoured and self-cured.



One thin layer of EQUIA Coat applied.
Light-cured for 10 seconds for a fast, strong and aesthetic restoration.

Occlusal Pit Primary Dentition



Minimally invasive preparation of deep occlusal pit.
Limited trauma - quick process.



After application of GC CAVITY CONDITIONER and rinsing.
EQUIA Fil is injected directly into the preparation.



EQUIA Coat is applied then light-cured.
Final restoration is conservative.
Fast, parent and patient friendly.

Buccal Pit Primary Dentition



Buccal pit.
Decision to utilize Minimally Invasive techniques.



Spoon excavate remnant caries.
Limit trauma and preserve tooth structure.



Finished restoration after direct application of EQUIA Fil and EQUIA Coat.
Aesthetic and protective.



Class V and Root Surface Caries



Facial caries of Maxillary Canine post orthodontic treatment. Spoon excavate infected dentin.



After injected EQUIA Fil, finish with carbide bur under water spray.



Finished restoration. Benefits: self-adhesive, higher translucency, high fluoride release, self-curing, reduce risk of secondary caries, finishing and polishing in 2 minutes, 30 seconds.

Amalgam Replacement



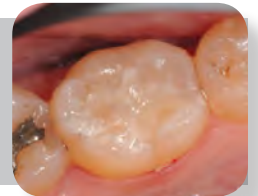
Defective amalgam. Minimally Invasive treatment indicated.



Minimally Invasive preparation design preserving tooth structure.



EQUIA Fil is injected directly into the preparation. No bonding is required.



After EQUIA Fil is bulk filled and set. Contour with finishing bur, apply EQUIA Coat.



EQUIA – BULK FILL SELF-ADHESIVE AESTHETIC POSTERIOR RESTORATIVE		
EQUIA Intro Kits	439402	Assorted Shades (includes EQUIA Fil (10 each: A2, A3, A3.5, B1, B3) EQUIA Coat and GC CAVITY CONDITIONER)
	439404	Shade A1 (includes EQUIA Fil (50 of A1), EQUIA Coat and GC CAVITY CONDITIONER)
	439412	Shade A2 (includes EQUIA Fil (50 of A2), EQUIA Coat and GC CAVITY CONDITIONER)
	439407	Shade A3 (includes EQUIA Fil (50 of A3), EQUIA Coat and GC CAVITY CONDITIONER)
	439410	Shade A3.5 (includes EQUIA Fil (50 of A3.5), EQUIA Coat and GC CAVITY CONDITIONER)
	439414	Shade B1 (includes EQUIA Fil (50 of B1), EQUIA Coat and GC CAVITY CONDITIONER)
	439413	Shade B2 (includes EQUIA Fil (50 of B2), EQUIA Coat and GC CAVITY CONDITIONER)
	439168	Shade B3 (includes EQUIA Fil (50 of B3), EQUIA Coat and GC CAVITY CONDITIONER)
EQUIA Starter Kits	439425	Assorted Shades (includes EQUIA Fil (10 each: A2, A3, A3.5, B1, B3) EQUIA Coat, GC CAVITY CONDITIONER and GC Fuji CAPSULE APPLIER)
	439430	Shade A2 (includes EQUIA Fil (50 of A2) EQUIA Coat, GC CAVITY CONDITIONER and GC Fuji CAPSULE APPLIER)
EQUIA Refills	004259	EQUIA Fil Assorted Refill (10 each: A2, A3, A3.5, B1, B3)
	004260	EQUIA Fil Single Shade Refill A1 (50)
	004261	EQUIA Fil Single Shade Refill A2 (50)
	004262	EQUIA Fil Single Shade Refill A3 (50)
	004263	EQUIA Fil Single Shade Refill A3.5 (50)
	004264	EQUIA Fil Single Shade Refill B1 (50)
	004265	EQUIA Fil Single Shade Refill B2 (50)
	004266	EQUIA Fil Single Shade Refill B3 (50)
	004267	EQUIA Fil Single Shade Refill C4 (50)
004268	EQUIA Coat 4mL Refill	
GC CAVITY CONDITIONER	000110	GC CAVITY CONDITIONER 5.7mL Bottle (20% polyacrylic acid and 3% aluminum chloride hexahydrate)
Accessory	437555	GC Fuji CAPSULE APPLIER