

EQUIA® Forte

BULK FILL, FLUORIDE RELEASING
GLASS HYBRID RESTORATIVE SYSTEM



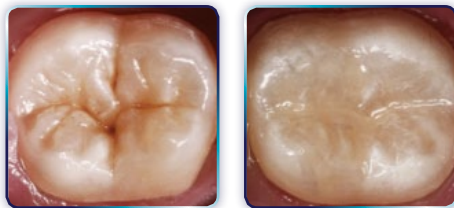
GC AMERICA: GLOBAL LEADER IN GLASS IONOMER TECHNOLOGY



TOUCH of GENIUS™

Class I Restoration

Photos courtesy of Dr. Dan Ward, Columbus, OH.

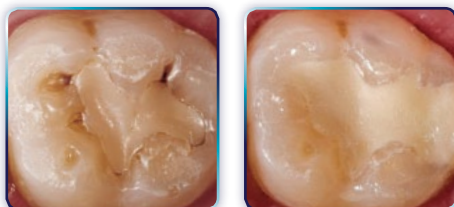


Before

After

Stress Bearing Class II Restoration

Photos courtesy of Dr. Mark Pitel, Poughkeepsie, NY.



Before

After

- EQUIA® Forte builds on the remarkable clinical performance of original EQUIA® and presents an aesthetic and effective alternative to amalgam, composites and compomers.
- EQUIA® Forte consists of EQUIA® Forte Fil, a high strength glass hybrid restorative and EQUIA® Forte Coat, a wear resistant, self-adhesive, light cured resin coating.
- Expanded Indications: Class I, stress bearing and non-stress bearing Class II and Class V.¹
- Fast placement, wet-field compatibility, excellent aesthetics, longevity and no post-operative sensitivity!
- Great for pediatric, geriatric & high-carries-risk patients!

¹Basso M, Brambilla E, Benites MG, Giovannardi M, Ionescu AC. Glassionomer cement for permanent dental restorations: a 48-months, multi-centre, prospective clinical trial. Stoma Edu J. 2015;2(1):25-35

A New Generation of High Strength, Wear Resistant Glass Hybrids



Technique Guide



Prepare cavity. (Optional use of cavity conditioner.)



Bulk Fill.



Final finishing.



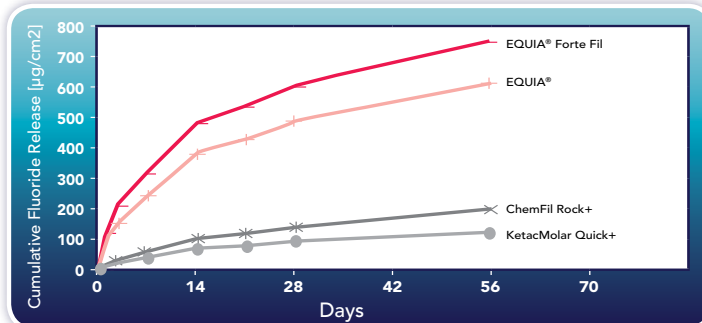
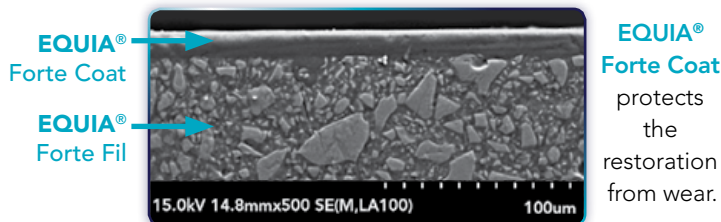
Apply EQUIA® Forte Coat.



Light cure for 20 sec.

EQUIA® Forte has 20% higher flexural strength, 21% increased acid resistance and 40% improved wear resistance, when compared to original EQUIA®!

EQUIA® Forte Fil's glass hybrid innovation is achieved through the introduction of ultrafine, highly reactive glass particles, dispersed within the conventional Glass Ionomer (GI) structure. With the addition of a higher molecular weight polyacrylic acid, the new glass hybrid formulation builds a high strength restorative. EQUIA® Forte Coat incorporates a new multi-functional monomer that produces a tougher resin matrix. Together, these innovations result in a strong, bulk-fill GI restorative system with exceptional physical properties and aesthetics.



Product	EQUIA® Forte Fil (New)	EQUIA® (Original)	Ketac Molar Quick Aplicap+	ChemFil Rock+
Compressive Strength [MPa]	218.98	210.9	200.60	176.30
Flexural Strength [MPa]	43.2	35.5	44.36	50.00
Acid erosion [mm]	0.11	0.138	Yes	Yes
Wear erosion [µm]	20	29.7	26.9	43.7

Ordering Information

EQUIA® Forte Intro Kit

Contains: 48 intro capsules EQUIA® Forte Fil, 4mL EQUIA® Forte Coat, CAVITY CONDITIONER (GC) and accessories.

- 452001 A1 452002 A2 452003 A3
- 452004 A3.5 452006 B1 452007 B2
- 452008 B3 452009 C4
- 452005 Assorted (10 caps each of A2, A3, and A3.5; 9 caps each of B1 and B3)

EQUIA® Forte Fil Refill

Contains: 48 capsules EQUIA® Forte Fil

- 452010 A1 452011 A2 452012 A3
- 452013 A3.5 452014 B1 452015 B2
- 452016 B3 452017 C4
- 452000 Assorted (10 caps each of A2, A3, and A3.5; 9 caps each of B1 and B3)

EQUIA® Forte Coat

- 452500 EQUIA® Forte Coat (contains one 4mL bottle and accessories)
- 452505 EQUIA® Forte Coat (contains 50 unit doses (0.1mL each) and accessories) **NEW!**

000110 CAVITY CONDITIONER (GC)

Contains: 5.7mL bottle

437555 GC CAPSULE APPLIER III

