



START INJECTING WITH OUR STRONGEST COMPOSITE EVER

G-aenial™ Universal Injectable

Injectable High-Strength Ultra-Fine Particle Composite

Place, shape, & contour all at once while injecting, to provide an exceptionally strong & long-lasting restoration!

- Injectable with total control - create anatomy as you inject with no slumping or stringing
- Superb handling with excellent adaptation to the cavity preparation, recommended for Class I, II, III, IV, and V restorations
- Strong and highly durable restorations, exhibiting outstanding flexural strength and wear-resistance
- Long-lasting esthetics - high gloss retention and resistance to discoloration





An injectable high-strength ultra-fine particle composite with ideal viscosity, handling and adaptation characteristics that may be used for long-lasting esthetic restorations.

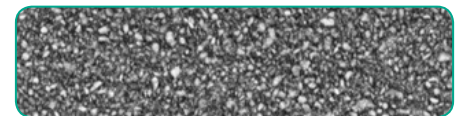
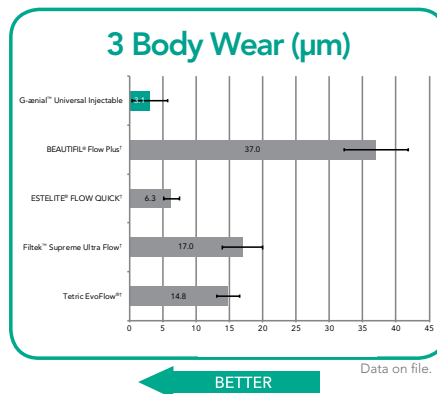
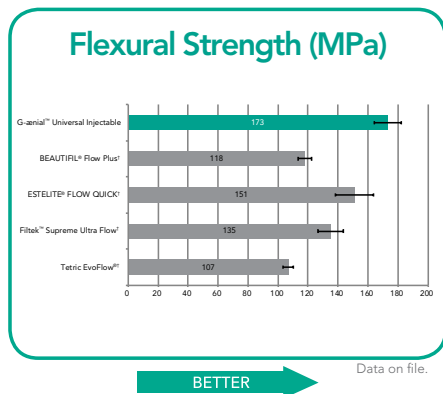
The homogeneously dispersed ultra-fine barium-glass particles formula (150nm particle size, 69% wt filler loading) provides high flexural strength and wear resistance for a durable and long lasting restoration.



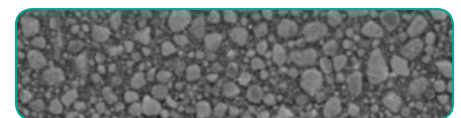
Metal tip may be bent with fingers if necessary to better access posterior distal region.

Class	Cavity Depth	Product Recommendation
I / II	Up to 2 mm	G-ænial™ Flo X or
		G-ænial™ Universal Injectable
I / II	Up to 4 mm	G-ænial™ BULK Injectable
I / II	4-6 mm	G-ænial™ BULK Injectable & G-ænial Sculpt®
I / II	6 mm +	G-ænial™ BULK Injectable & G-ænial Sculpt®

G-ænial™ Universal Injectable features high flexural strength, for protection against chipping and fracture, and outstanding wear resistance for excellent durability and gloss retention.



G-ænial™ Universal Injectable
Ultra-Fine Particles



Competitive Product
Larger Particles

Before



After



Courtesy of Robert Marus, DDS, Yardley, PA

G-ænial™ Universal Injectable Refills

Contains: Two 1.7g (1.0mL) syringes, 10 long dispensing tips and 10 short dispensing tips.

- | | | |
|-------------|------------|------------|
| 012364 A1 | 012365 A2 | 012366 A3 |
| 012367 A3.5 | 012368 A4 | 012369 B1 |
| 012370 B2 | 012371 CV | 012372 CVD |
| 012373 AO1 | 012374 AO2 | 012375 AO3 |
| 012376 JE | 012377 AE | 012378 XBW |
| 012379 BW | | |