

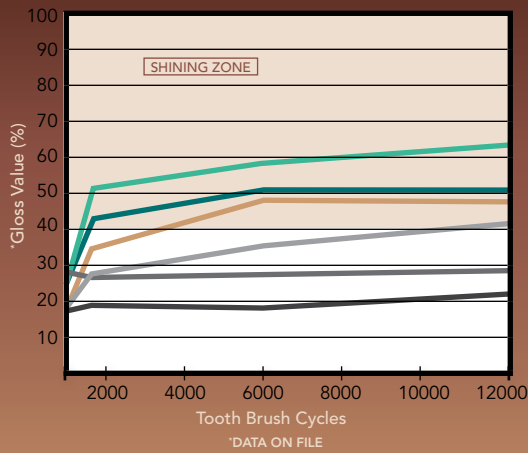
# G-ænial Sculpt®

LIGHT-CURED UNIVERSAL NANO  
HYBRID COMPACTABLE COMPOSITE

THE UNIVERSAL  
COMPOSITE  
THAT KEEPS  
POLISHING IN MOUTH



## SELF POLISHING/SHINING EFFECT



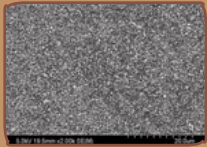
	G-ænial Sculpt		Filtek Supreme Ultra†
	G-ænial Flo		Estelite Sigma Quick†
	G-ænial Universal Flo		Majesty ES-2†

† Not a registered trademark of GC America

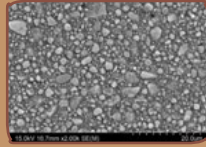
## TOUCH of GENIUS™

- Superior polish and high gloss retention
- Self-polishing effect enables additional polish in mouth
- Extraordinary wear resistance due to uniform nano-filler dispersion
- Easy to shape, yet stays in place
- Excellent radiopacity (>300% AI)

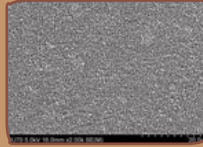
# GC Nano-filler Technology Comparison



**G-aenial Sculpt**  
(300nm Barium glass)



**Filtek™ Supreme Ultra\***  
(4 to 1,000nm Zirconia & Silica)  
\*Not a registered trademark of GC America.



**G-aenial Universal Flo**  
(200nm Strontium glass)

The unique surface treatment of nano inorganic filler and high density & uniform dispersion technology. The technology achieves wear resistance and good physical properties (shining surface texture like natural enamel with lasting esthetics). Even in areas that are difficult to polish, filled G-aenial Sculpt obtains gloss with daily brushing.

G-aenial Sculpt is a great companion to G-aenial Universal Flo. Its fine, 300-nanometer barium glass particle allows for high strength aesthetics, excellent polish and high gloss retention. Its low shrinkage stress and ideal handling properties allow for placement in all classes of restorations. The high filler loading (78% wt) and homogenous dispersion of nano-filler maximizes polish retention and wears better than other universal composite restoratives.

## Class III Restoration

Courtesy of Dr. (Prof.) Masashi Miyazaki (Nihon University), Japan

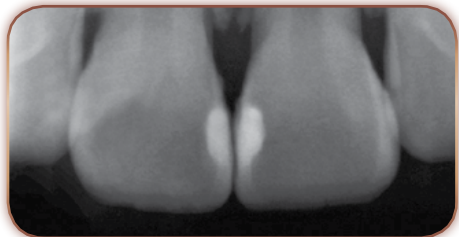


Pre-restoration

Post-restoration

## Radiopacity

Courtesy of Dr. (Prof.) Masashi Miyazaki (Nihon University), Japan



### G-aenial Sculpt Syringe Introductory Kit (2.0 mL)

<b>401000</b>	1 syringe of each A1, A2, and A3 and 1 G-Premio BOND 5mL Kit
---------------	---

### G-aenial Sculpt Unitip Introductory Kit (0.16 mL each)

<b>401100</b>	20 unitips of each A1, A2, and A3 and 1 G-Premio BOND 5mL Kit
---------------	--

### G-aenial Sculpt Syringe Refill (2.0 mL) contains 1 Syringe

<b>009152</b>	A1	<b>009161</b>	AO1
<b>009153</b>	A2	<b>009162</b>	AO2
<b>009154</b>	A3	<b>009163</b>	AO3
<b>009155</b>	A3.5	<b>009164</b>	Bleach White (BW)
<b>009156</b>	A4	<b>009165</b>	Extra Bleach White (XBW)
<b>009157</b>	B1	<b>009166</b>	Cervical (CV)
<b>009158</b>	B2	<b>009167</b>	Juvenile Enamel (JE)
<b>009159</b>	B3	<b>009168</b>	Adult Enamel (AE)
<b>009160</b>	C3		

### G-aenial Sculpt 20 Unitip Refill (0.16 mL each) contains 20 tips

<b>009169</b>	A1	<b>009174</b>	B1
<b>009170</b>	A2	<b>009175</b>	B2
<b>009171</b>	A3	<b>009176</b>	B3
<b>009172</b>	A3.5	<b>009177</b>	C3
<b>009173</b>	A4		

### G-aenial Sculpt 10 Unitip Refills (0.16 mL each) contains 10 tips

<b>009178</b>	AO1	<b>009182</b>	Extra Bleach White (XBW)
<b>009179</b>	AO2	<b>009183</b>	Cervical (CV)
<b>009180</b>	AO3	<b>009184</b>	Juvenile Enamel (JE)
<b>009181</b>	Bleach White (BW)	<b>009185</b>	Adult Enamel (AE)

