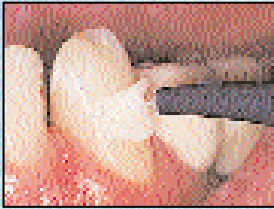
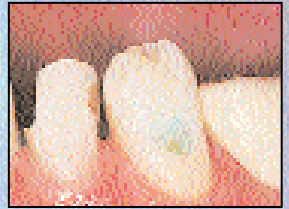


## Easy Fuji II LC Restoration Technique

Just prepare the cavity and apply GC Cavity Conditioner to remove the smear layer and seal the dentin tubules. Place the mixed Fuji II LC into the cavity. Light cure, trim and finish.



## Simple Sandwich Technique

*Use Fuji II LC as a base or liner to prevent marginal leakage, provide superior fluoride release and eliminate sensitivity.*

Prepare cavity, apply GC Cavity Conditioner for 10 seconds and rinse. Place mixed Fuji II LC as a base or liner, then light-cure. Acid etch as needed, apply enamel bonding agent and finish the restoration with a tooth colored restorative.



# FUJI II™ LC

## Light-cured Resin Reinforced Glass Ionomer Restorative

### Product Code

**436400 Fuji II LC 25-Capsule Assorted Package - Light Shades**  
Contains: 5 Capsules (0.33g Powder / 0.085ml Liquid) each: A1, A2, A3, B2 and C2

**436700 Fuji II LC 25-Capsule Assorted Package - Dark Shades**  
Contains: 5 Capsules (0.336g Powder / 0.085ml Liquid) each: A3.5, A4, B3, B4 and C4

### Fuji II LC 50-Capsule Packages

Contains: 50 Capsules (0.33g Powder / 0.085ml Liquid) SAME Shade

<b>000138</b> Shade A1	<b>000142</b> Shade A4	<b>000146</b> Shade C2
<b>000139</b> Shade A2	<b>000143</b> Shade B2	<b>000147</b> Shade C4
<b>000140</b> Shade A3	<b>000144</b> Shade B3	
<b>000141</b> Shade A3.5	<b>000145</b> Shade B4	

**435881 Capsule Applier**

### Fuji II LC 1:1 Powder-Liquid Packages

Contains: One 15g bottle powder, one 6.8ml liquid, mixing pad and measuring scoop

<b>000184</b> Shade A1	<b>000188</b> Shade A4	<b>000192</b> Shade C2
<b>000185</b> Shade A2	<b>000189</b> Shade B2	<b>000193</b> Shade C4
<b>000186</b> Shade A3	<b>000190</b> Shade B3	
<b>000187</b> Shade A3.5	<b>000191</b> Shade B4	

### Fuji II LC Powder Refill

Contains: One 15g bottle powder

<b>000195</b> Shade A1	<b>000199</b> Shade A4	<b>000203</b> Shade C2
<b>000196</b> Shade A2	<b>000200</b> Shade B2	<b>000204</b> Shade C4
<b>000197</b> Shade A3	<b>000201</b> Shade B3	
<b>000198</b> Shade A3.5	<b>000202</b> Shade B4	

**000206 Fuji II LC Liquid Refill** - Contains: One 6.8ml bottle liquid

**000110 GC Cavity Conditioner** - Contains: One 5.7ml bottle of conditioner

**434291 Glass Ionomer Spatula**

**000181 Fuji II LC CORE Material (Blue Shade)**

Contains: One 35g powder, two 5ml bottles of liquid, powder scoop and mixing pad

**000182 FUJI II LC CORE Powder Refill Bottle** - Contains: One 35g bottle powder

**000183 FUJI II LC CORE Liquid Refill Bottle** - Contains: One 5ml bottle liquid

### PHYSICAL PROPERTIES<sup>11</sup>

Powder to liquid ratio	3.2g/1.0g	Surface roughness (Rz)	1.3 $\mu$ m
Working time	3 min. 45 sec.	Fluoride release $\mu$ g/cm <sup>2</sup>	
Light curing set time	20 sec.	1st day	48.9
Depth of cure (A2 shade)	3.7mm	one week, cumulative	9.8, 119.7
Compressive strength (1 day) <sup>10</sup>	242 MPa (10)	6 months, cumulative	1.6, 543.0
Tensile bonding strength (1 day) <sup>10</sup>		1 year, cumulative	1.5, 806.6
- Bovine enamel	11.3 MPa (1.8)	Rechargeable fluoride	Yes
- Bovine dentin	8.2 MPa (0.9)	Radiopacity	Yes
Solubility (%)		Biocompatible	Yes
- Distilled water	0.07		
- 0.001 mol/l lactic acid	0.24		

<sup>1</sup> Brackett, et al. 1-year clinical evaluation of Compoglass and Fuji II LC in cervical erosion / abfraction lesions. *Am J Dent*; 12(3):119-22. <sup>2</sup> Pereira, et al. In vitro secondary caries inhibition around fluoride releasing materials. *J Dent* 1998; 26(5-6):505-10. <sup>3</sup>Takahashi, et al. Effects of fluoride release from glass ionomers on bovine enamel. *J Dent Res* 1998; 77:972. <sup>4</sup> Boghosian, et al. Clinical evaluation of a resin-modified glass ionomer restorative: 5-year results. *J Dent Res* 1999; 78:285. <sup>5</sup> Vitremer, Herculite XR and Dyract are not trademarks of GC America Inc. <sup>6</sup> Vita is a trademark of Vita Zahnfabrik. <sup>7</sup> Restorative materials containing fluoride, Council on Dental materials, Instruments and Equipment, JADA, Vol. 116, May 1988 <sup>8</sup> Todo, A, et al, The surface roughness of glass ionomer cement for restorative filling, *J Dent* 1996; 75:68 <sup>9</sup> Park, SH, The anticariogenic effect of fluoride in primer, bonding agent and composite resin in the cavosurface enamel area. *Oper Dent* 1997; 22(3):115-20 <sup>10</sup> Test mold 3.0 x 7.5 mm

<sup>11</sup> GC Corp. R&D <sup>12</sup> From published data Clinical photos courtesy of Larry Herwig, D.D.S., Scott Dillingham, D.D.S., Dr. Saito, Nels Ewoldsen, D.D.S., M.S.D. and James Jenkins, D.D.S.



**GC America Inc.**

*Advancing the Art and Science of Dentistry*

© 2003 GC America Inc., 3737 West 127th St., Alsip, Illinois 60803

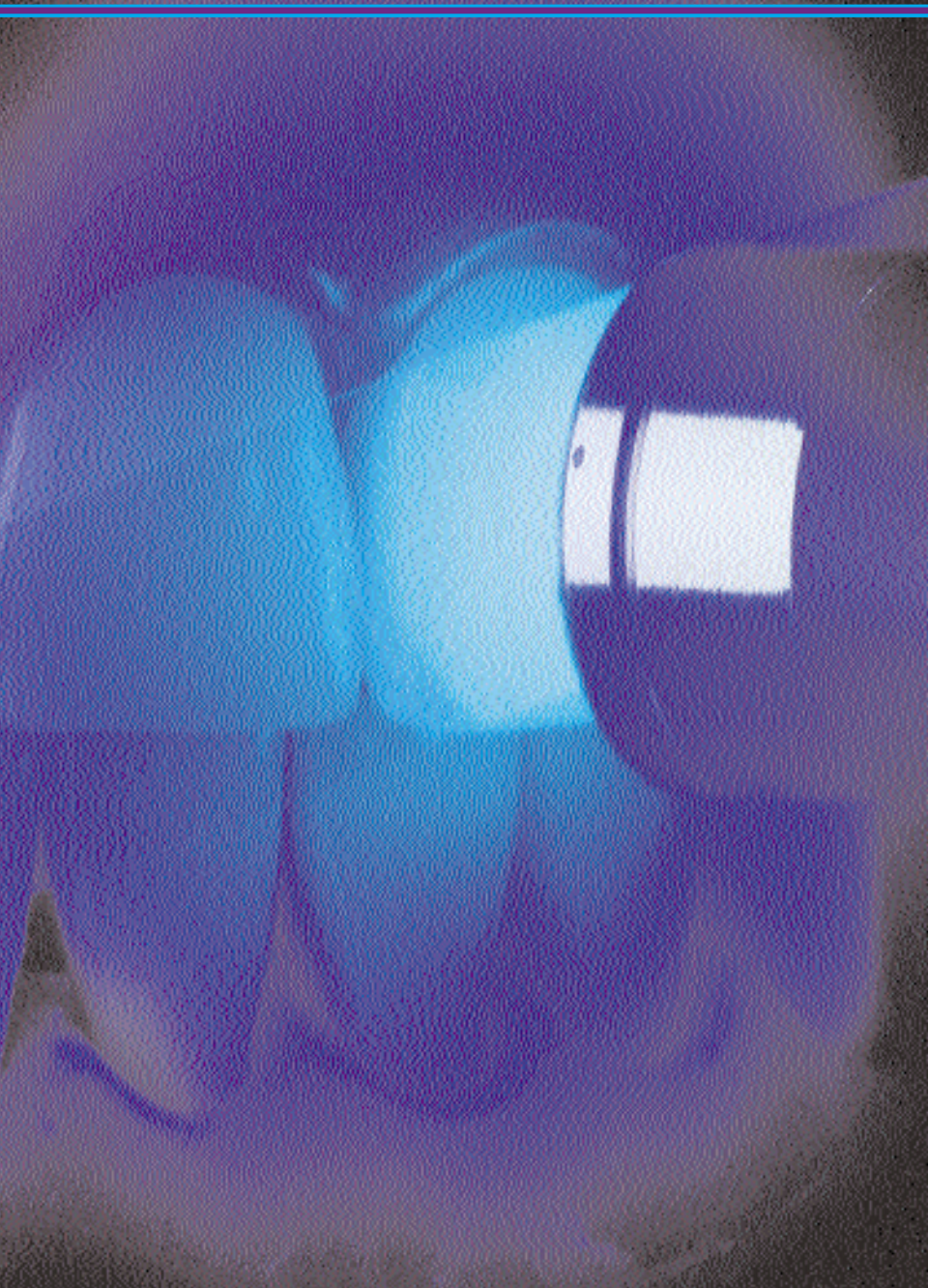
<http://www.gcamerica.com>

Lit. Code 843009



# GC Fuji II™ LC

Light-cured Resin Reinforced  
Glass Ionomer Restorative



Class III

Class V

Root Surface Caries

Cervical Erosion

Abfraction Lesions

And Makes Any Restoration Last Longer  
when used as a Base or Liner!



# Fuji II LC Light-Cured Resin Reinforced Glass Ionomer Restorative

Clinically proven Fuji II LC restorative brings you all the advantages of a traditional glass ionomer along with important advances like triple curing, immediate finishing, outstanding esthetics, as well as a simple technique and time savings.



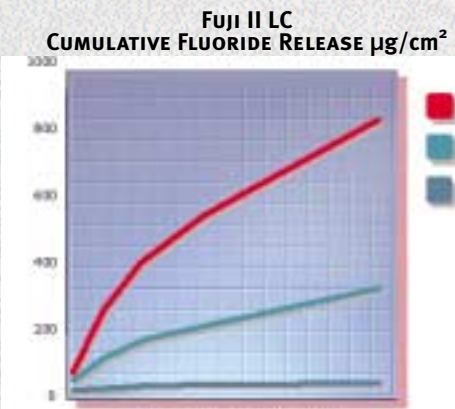
Fuji II LC is perfect for Class III & Class V restorations, particularly cervical erosion / abfractions and root surface restorations<sup>1</sup>, but the number one usage of Fuji II LC is as a base or liner in a sandwich technique.

**Fuji II LC Makes Any Restoration Last Longer** by preventing marginal leakage, providing superior fluoride release and eliminating sensitivity.

## Prevents Margin Leakage

Fuji II LC is a perfect sealant. It clinically bonds extremely well to dentin and enamel, has a tooth-like coefficient of thermal expansion and is clinically insoluble. Fuji II LC minimizes the likelihood of microleakage and washouts so that the margins stay intact, maintaining the bond and sealing the restoration.<sup>4</sup>

## Provides Superior Fluoride Protection<sup>2 & 9</sup>



Unlike products with fluoride additives, Fuji II LC offers clinically significant fluoride protection. Its rechargeable<sup>3</sup> fluoride release and excellent marginal seal help provide remineralization. Research has shown that high fluoride release into the tooth helps prevent recurrent decay.<sup>7</sup> For these reasons Fuji II LC has long been

used for pediatric and geriatric restorations and help protect patients with rampant caries and multi-level treatment needs.

*10 times more sustained fluoride release than Dyract.<sup>12</sup>*

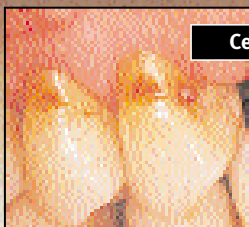


**Before**

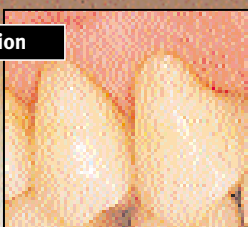
**After**  
restoration with Fuji II LC



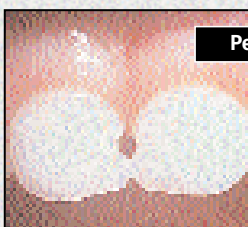
Class III and V's



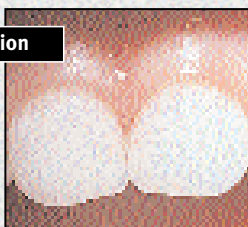
Cervical erosion



Class III and V defects



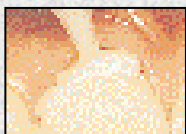
Pedo restoration



Base or Liner



## Ultra Convenient and Economical



Choose Fuji II LC Capsules for the ultimate in convenience and precise delivery. They're easy to use with no hand mixing and never any mess. Just triturate 10 seconds for the ideal viscosity, place into the capsule applicator and dispense the material.

Fuji II LC is also available in a powder-liquid form which represents an outstanding value.

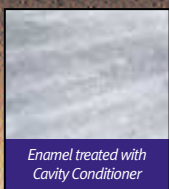
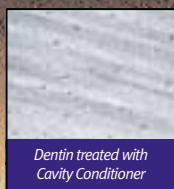
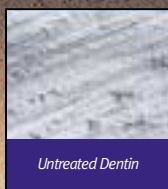
Either way, you get the same great restorative material that light cures on command. Finishing and polishing can be completed immediately after light curing.



## Eliminates Sensitivity<sup>4</sup>

Clinically proven to eliminate existing pre-operative sensitivity and post operative sensitivity, Fuji II LC not only expands and contracts similar to tooth structure, it actually becomes a pulp protective thermal insulator.

## GC Cavity Conditioner

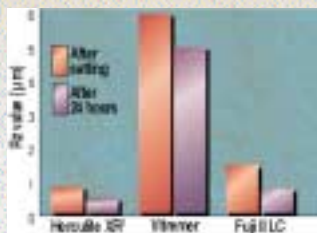


10 second application of GC Cavity Conditioner cleans the prepared tooth surface to promote a better bond. Its 20% polyacrylic acid component effectively removes the smear layer

and debris while the 3% aluminum chloride hexahydrate component seals the dentin tubules to minimize the chance of pulpal sensitivity.

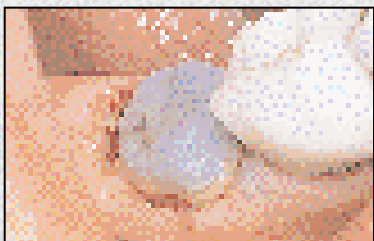
## Surface Roughness<sup>8</sup>

Fuji II LC can be polished to a smooth surface finish. Chart at the right compares the final surface roughness (RZ Value) of Fuji II LC vs. a composite and a competitive glass ionomer.



## Outstanding Translucency and Esthetics

With 10 Vita<sup>6</sup> shades, color matching is quick and easy. Excellent translucency allows Fuji II LC to blend with patients' natural tooth color for life-like results every time. Once polished, the hard smooth surface holds discoloration and stain to a minimum for lasting beauty.



## Fuji II LC CORE Material

is a blue shade powder-liquid formulation for light-cured core build-ups that are easily distinguishable from tooth structure. Bonds to metal pins and posts for increased retention.

## Outstanding Physical Properties & Handling

Featuring an outstanding chemical bond to tooth structure that's micro-mechanically reinforced, triple-cured (20 second light-cure; glass ionomer and resin matrix self-cure) Fuji II LC's high compressive, tensile and flexural strengths assure longevity and integrity.

No dentin primer and no bonding agent. No drying or waiting. And there's no need for undercuts or mechanical retention.

Fuji II LC's consistency makes it easy to place and contour (with less "pullback" than composite). And, like all glass ionomers, it works perfectly in a moist field.

## Proven Clinical Performance

### 100% Retention after 5 Years<sup>4</sup>

More studies have been completed on Fuji II LC than on almost any other tooth-colored restorative. U.S. Patent #5,063,257.