

5. DEBONDING PROCEDURE

Remove bonded bands/crowns from the buccal or lingual side using band/crown removing pliers. Remove any residual material with adhesive removing pliers, scaler or rotary instrument.

CLEANING / STERILIZATION OF PASTE PAK DISPENSER

For cleaning and sterilization of PASTE PAK DISPENSER, refer to the respective instructions for use.

SHADE

Blue

STORAGE

Store in a cool and dark place (4 - 25°C) (39.2 - 77.0°F).

If not in use for a prolonged period of time, store in refrigerator.
(Shelf life: 2 years from date of manufacture)

PACKAGE

- 1) GC Fuji ORTHO BAND LC PASTE PAK (Automix Compatible) Refill Package
Paste Pak Cartridge (13.3g / 7.2mL) (2) , mixing pad (No. 22) (1)
- 2) Paste Pak Dispenser (1)
- 3) GC Mixing Tip LC (20)

CAUTION

1. In case of contact with oral tissue or skin, remove immediately with a sponge or cotton soaked in alcohol. Flush with water. To avoid contact, a rubber dam and/or cocoa butter can be used to isolate the operation field from the skin or oral tissue.
2. In case of contact with eyes, flush immediately with water and seek medical attention.
3. In rare cases metal may cause sensitivity to some people. If any such reactions are experienced, discontinue the use of Paste Pak Dispenser (nickel-plated aluminum) and refer to a physician.
4. Store Paste Pak Dispenser away from chemicals such as iodine tincture containing halogen element. Otherwise the dispenser may discolor.
5. Do not use GC Fuji ORTHO BAND LC PASTE PAK in combination with eugenol containing materials as eugenol may hinder GC Fuji ORTHO BAND LC PASTE PAK from setting or bonding properly.

MANUFACTURED BY
GC CORPORATION
76-1 Hasunuma-cho, Itabashi-ku, Tokyo 174-8585, Japan

DISTRIBUTED BY
GC CORPORATION
76-1 Hasunuma-cho, Itabashi-ku, Tokyo 174-8585, Japan

GC AMERICA INC.
3737 West 127th Street, Alsip, IL 60803 U.S.A.
TEL: +1-708-597-0900

GC ASIA DENTAL PTE. LTD.
19 Loyang Way, #06-27 Singapore 508724
TEL: +65 6546 7588

PRINTED IN JAPAN

GC Fuji ORTHO BAND LC PASTE PAK (Automix Compatible)

DUAL CURED REINFORCED GLASS IONOMER
ORTHODONTIC BAND CEMENT

Prior to use, carefully read
these instructions for use.

For use only by a dental professional in the recommended indications.

RECOMMENDED INDICATIONS

1. Cementation of orthodontic bands.
2. Cementation of appliances retained with stainless steel crowns (e.g., Herbst or expansion appliances).

CONTRAINDICATIONS

In rare cases the product may cause sensitivity in some people. If any such reactions are experienced, discontinue the use of the product and refer to a physician.

180481 GC

IDENTIFICATION OF PARTS (Fig. 1)

- A. Paste Pak Cartridge
1. Cover 2. Inner plunger 3. Cartridge tip
- B. Paste Pak Dispenser
4. Piston 5. Adjusting guide 6. Lever 7. Sliding block
8. Piston release
- C. GC Mixing Tip For LC (Available separately)
9. Release tab 10. Grip 11. Guide Pin

PASTE PAK CARTRIDGE LOADING

1. Make sure that the piston is completely retracted into the dispenser (Fig. 2).

NOTE :

To retract the piston, push the piston release and at the same time pull the sliding block (on the underside of the dispenser) with fingers.

2. Load the cartridge into the Paste Pak Dispenser (Fig.3). Ensure the ▲ mark on the cartridge lines up with the ▲ mark on the Paste Pak Dispenser as illustrated. Then turn the cartridge fully to the right position.

3. After cartridge loading, push the piston release forward until it stops (Fig. 4).

- a) Push the piston release forward.
b) Do not push the upper side.

NOTE:

To remove the cartridge, retract the piston fully and turn the cartridge back to the marked positions.

DIRECTIONS FOR USE

1. TOOTH PREPARATION

- a) Clean the tooth surfaces to be cemented with pumice and water.

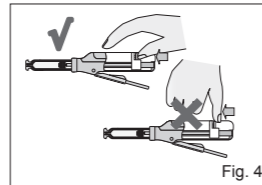
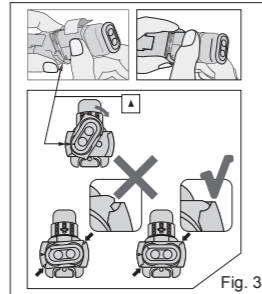
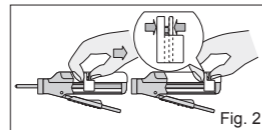
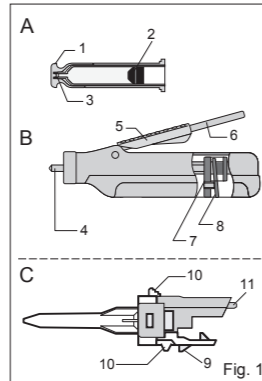
- b) Rinse thoroughly with water. Remove excess moisture by blotting with a cotton pellet or gently blowing with an oil-free air. DO NOT DESICCATE. Prepared surfaces should appear moist (glistening).

NOTE:

If the surface to be bonded contains porcelain, zirconium ceramic or metal, porcelain should be sandblasted and pre-treated with silane, and zirconium ceramic and metal should be sandblasted. Refer to manufacturer's instructions.

2. BAND PREPARATION

Make sure that the band is pretreated and handled according to the manufacturer's instructions.



3-1. DISPENSING AND HANDMIXING

- a) Remove the cartridge cover.
b) Depress the lever to dispense the required amounts of paste onto the mixing pad.

NOTE:

1) Before dispensing the first time from a new cartridge or after a long interval in between use, bleed the pastes from the cartridge.

2) The adjusting guide can be moved forwards or backwards to change the quantity of material to be dispensed (Fig. 5). Set the adjusting guide to the front of the lever for cementation of one band.

- c) Depress the lever while moving the cartridge and dispenser backward (Fig. 6). Keep depressing the lever (Fig. 7-1), level and cut off the extruded material from the cartridge tips by moving the cartridge and dispenser to an upright position on the mixing pad (Fig. 7-2).

- d) When the lever is released after dispensing, residual pastes at the cartridge tips are retracted into the cartridge. Clean the cartridge tip and replace the cartridge cover.

NOTE:

The amount of residual material in the cartridge can be confirmed by the position of the sliding block on the underside of the dispenser.

- e) After dispensing, spread the two pastes thinly on the mixing pad using a plastic spatula. Mix thoroughly, with lapping strokes, for 10 seconds. Be careful not to incorporate air bubbles.

NOTE:

- 1) Larger amount of paste requires a longer mixing time (15 seconds).
2) Do not mix GC Fuji ORTHO BAND LC PASTE PAK with other materials.

3-2. DISPENSING AND AUTOMIXING with GC Mixing Tip For LC (available separately)

- a) Remove the cartridge cover.
b) Before every use, check the two openings of the cartridge tip and confirm the pastes are at the same level to ensure even flow from the cartridge.

NOTE:

Before dispensing the first time from a new cartridge or after a long interval in between use, bleed the pastes from the cartridge.

- c) Attach the GC Mixing Tip For LC correctly on the cartridge by aligning the guide pin on the GC Mixing Tip For LC with the hole on the cartridge, simultaneously pushing the tip until it clicks on the cartridge (Fig. 8-1).

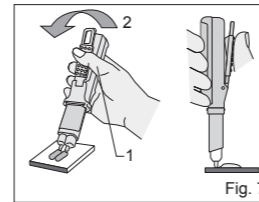
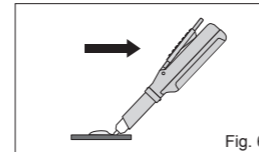
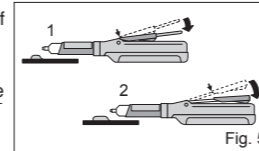
NOTE:

- 1) Make sure GC Mixing Tip For LC is securely attached to the cartridge. If not, remove the GC Mixing Tip For LC and reattach (Fig. 8-2).
2) If the material has been refrigerated, leave the cartridge in room temperature for 10 minutes.

- d) Set the adjusting guide to the front of the lever (Fig. 9).

NOTE:

Before dispensing the material into the appliances, bleed a small amount of the mixed paste on a pad.



- e) Slowly depress the lever to dispense the material onto the appliance.

- f) After dispensing, release the lever. To remove the GC Mixing Tip For LC, push the Mixing Tip forward while depressing the release tab with one hand, and move the front part of the GC Mixing Tip For LC from side to side with the other hand (Fig. 10). Clean the cartridge tip and replace the cartridge cover.

NOTE:

1) Do not leave the used GC Mixing Tip For LC on the cartridge for a long period of time.

2) The amount of residual material in the cartridge can be confirmed by the position of the sliding block on the underside of the dispenser. When only a small amount of paste remains in the cartridge, the paste may not be dispensed from the GC Mixing Tip For LC.

3) To avoid damage, do not drop the dispenser with the cartridge and mixing tip.

4. CEMENTATION TECHNIQUE

a. Bands

1) Coat the internal surface of the band with sufficient mixed material. The working time is 5 minutes 30 seconds from start of mixing at 23°C (73.4°F). Higher temperature will shorten working time.

2) Seat the bands.

3) To remove excess cement, light cure using a visible light curing unit (Halogen, GC G-Light, LED) for 2-4 seconds or allow the cement to self-cure until excess cement feels rubbery.

4) Remove excess cement with a scaler.

5) Light cure from occlusal surface using the light curing unit.

Halogen, LED (470 nm wavelength) : 20 seconds
GC G-Light : 10 seconds

b. Appliances retained with stainless steel crowns

1) To facilitate removal of the appliance, place petroleum jelly on the occlusal surfaces of the teeth.

2) Fill the adapted crown with mixed material and seat. The working time is 5 minutes 30 seconds from start of mixing at 23°C (73.4°F). Higher temperature will shorten working time.

3) To remove excess cement, light cure using a visible light curing unit (470 nm wavelength : Halogen, GC G-Light, LED) for 2-4 seconds or allow the cement to self-cure until excess cement feels rubbery.

4) Remove excess cement with a scaler.

5) Light cure from occlusal surface using the light curing unit.

Halogen, LED (470 nm wavelength) : 20 seconds
GC G-Light : 10 seconds

