



GC Fuji ORTHO™ LC Automix (bracket adhesive)

GC Fuji ORTHO™ BAND LC Automix

Light-Cured Resin-Modified
Glass Ionomer Adhesives For
Orthodontic Brackets and Bands



New automix system and wet field compatibility makes it faster & easier for you. Sustained fluoride release prevents white spot formations & makes it better for your patients.

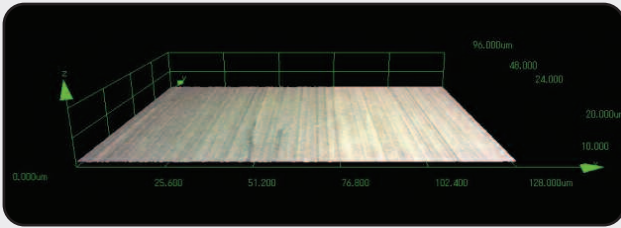


GC Fuji ORTHO™ LC adhesives chemically bond to tooth structure with mild conditioning **without damaging enamel.**

Phosphoric etch step with resins damage and demineralize enamel upon placement.

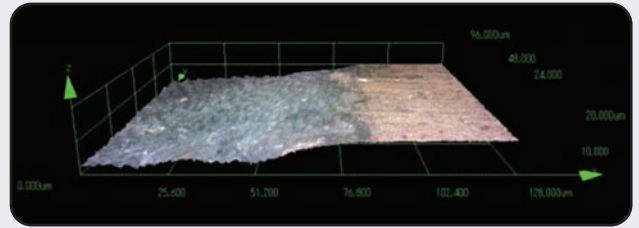
The difference between conditioning and etching is clear.

- LSM (Confocal laser scanning microscope) observation - Bovine enamel: 2400-grit polishing



GC ORTHO Gel Conditioner (10 Sec. treatment)

GC ORTHO Gel Conditioner prepares tooth structure for adhesive - without enamel loss.



Scotchbond Etchant™ (30 Sec. treatment)

When phosphoric acid is applied, 10 micrometers of enamel are lost.

GC Fuji ORTHO LC adhesive maintains bond strength and enamel.

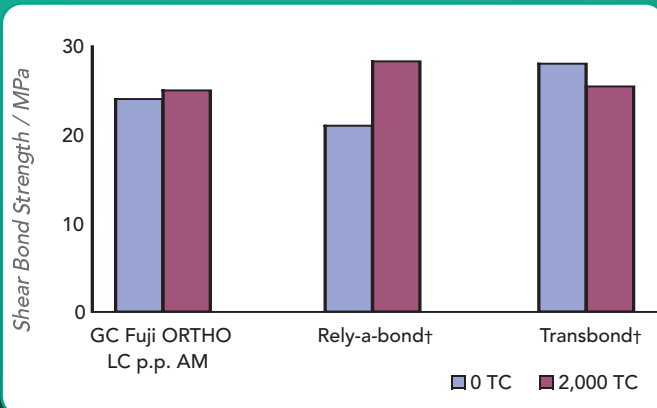


Case shown immediately after debanding brackets with GC Fuji ORTHO LC. Sustained fluoride release helps protect enamel.



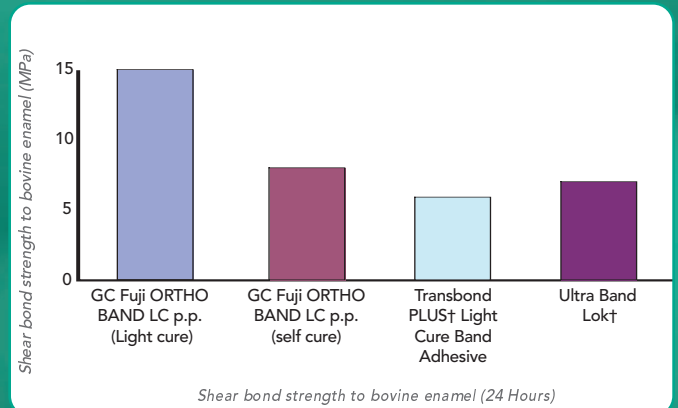
Case shown immediately after debanding brackets bonded with resin cement. Insufficient fluoride protection to prevent white spot lesions.

Bracket Strength



After 2,000 thermo cycles, GC Fuji ORTHO LC bracket adhesives are comparable to Resin Cements (Rely-A-Bond† and Transbond†).

Band Strength



Shear bond strength to bovine enamel (24 Hours)

The bonding of metal or ceramic brackets or bands, attachments & acrylic appliances has just gotten easier.



GC Fuji ORTHO LC (brackets) and GC Fuji ORTHO BAND LC are dual cured resin-reinforced orthodontic glass ionomer adhesives available in easy to use automix paste paks.

GC ORTHO Gel Conditioner is a 20% polyacrylic acid designed to mildly condition enamel. Available in syringe delivery with brush tips for easy application.

- Unique gel conditioner increases bond strength without damaging enamel
- Sustained and rechargeable fluoride release helps prevent white spot lesions
- Moisture tolerant adhesion for easier bonding
- Automix system simplifies application - ensuring a perfect mix
- Long working time for stress free placement
- Comparable retention strength to resin
- Easier clean-up without causing additional enamel damage

Light-cured bracket bonding technique



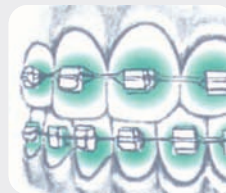
Clean tooth surface with pumice and water and then apply GC ORTHO Gel Conditioner for 10 seconds. Rinse thoroughly. Remove excess moisture with wet cotton roll.



Express GC Fuji ORTHO LC Automix onto bracket and press firmly against moist tooth. Adjust and place quadrant or full arch. Place and adjust brackets, tack cure for 2 seconds as needed to secure positioning.

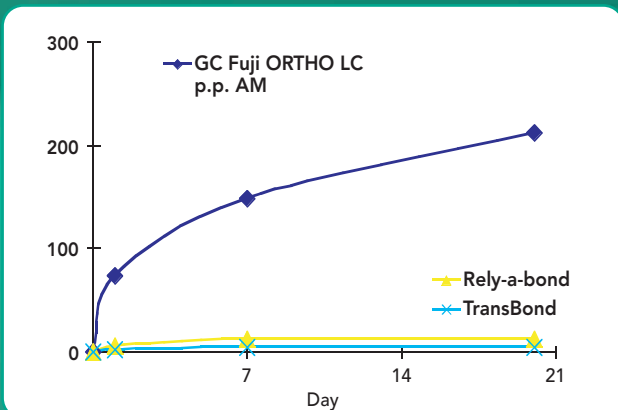


Light-cure each bracket For 20 seconds per aspect. Light tension leveling wires can be placed immediately after curing.



GC Fuji ORTHO adhesives sustained fluoride release provides a zone of inhibition to help prevent white spot lesions around brackets.

Superior Fluoride Protection



Studies show that glass ionomers release significant levels of fluoride, which helps prevent decalcification and decay.^{1,2,3}

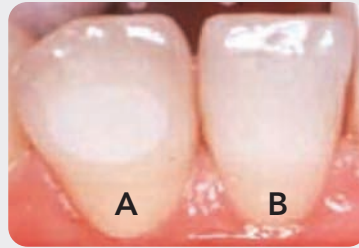
¹ Fowler PV, A 12-month clinical trial comparing bracket failure rates of light cured resin modified glass ionomer adhesive and acid etch chemical-cured composite, Aust Orthod J. 1998;15(3):186-90. ² Restorative Materials Containing Fluoride, JADA Vol. 116, May 1998 ³ Vorhies AB, Donly, Staley, Wefel, Enamel demineralization adjacent to orthodontic brackets bonded with hybrid glass ionomer cements; An in vitro study, Am J Dentofacial Orthop 1998; 114(6): 668-74. † not registered trademarks of GC America Inc.



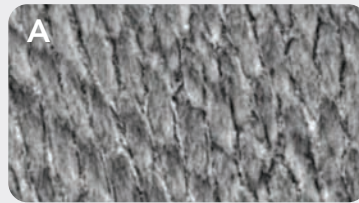
GC Fuji ORTHO™ Adhesives and Conditioner

GC Fuji ORTHO materials are better for your patients.

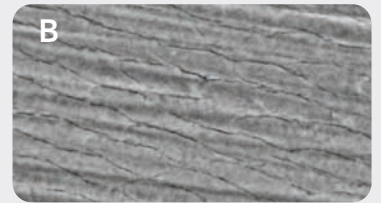
- GC Fuji ORTHO adhesives chemically bond to enamel after mild conditioning
- Moisture tolerant adhesion
- Sustained and rechargeable fluoride release helps prevent white spot lesions around brackets
- High retention equal to any adhesive
- Easy clean-up after bracket removal



Preserve Healthy Enamel By Using GC Fuji ORTHO Materials.



Typical phosphoric acid etching removes minerals from enamel.



GC ORTHO Gel Conditioner is a mild cleaning treatment.



MI Paste™ & MI Paste Plus™
The Perfect Complement For
Any Orthodontic Practice

439487 GC Fuji ORTHO LC Automix Starter Set
(1) Paste Pak Cartridge (13.3g), (1) Paste Pak Dispenser,
(2) Ortho Gel Conditioner Syringes (1.4g), (20) Mixing Tips
and (15) Brush Tips

003102 GC Fuji ORTHO LC Automix Set
(1) Paste Pak Cartridge (13.3g),
(2) Ortho Gel Conditioner Syringes (1.4g),
(20) Mixing Tips and (15) Brush Tips

003103 GC Fuji ORTHO LC Automix Paste Pak Refill
(2) Paste Pak Cartridges (13.3g)

003104 GC ORTHO Gel Conditioner
(3) Ortho Gel Conditioner Syringes (1.4g)
and (25) Brush Tips

439466 GC Fuji ORTHO BAND LC Starter Set
(2) Paste Pak Cartridges (13.3g), (1) Paste Pak Dispenser,
(20) Mixing Tips and (1) Mixing Pad

003105 GC Fuji ORTHO BAND LC Paste Pak Refill
(2) Paste Pak Cartridges (13.3g)
and (1) Mixing Pad

423008 (20) GC Mixing Tips for GC Fuji ORTHO LC

002614 MI Paste Plus Assorted 10-Tube Package
(2) Tubes of each flavor: Vanilla, Mint, Melon,
Tutti-Frutti and Strawberry

002621 MI Paste Plus Mint 10-Tube Package
(10) Tubes of Mint flavor

002665 MI Paste Assorted 10-Tube Package
(2) Tubes of each flavor: Vanilla, Mint, Melon,
Tutti-Frutti and Strawberry