

GC TiON™ Tooth Whitening System - In Office

For use by dental professionals following the recommended instructions.

GC TiON Tooth Whitening System is composed of non-fluoridated prophylaxis paste, gingival protector, Reactor, whitening gel and liquid, MI Paste™, shade guide and accessories. GC TiON features an exclusive, titanium dioxide photo initiator (visible light-activated). This special whitening formulation enables a higher whitening effect with lower hydrogen peroxide concentration (20%) than most other in-office whitening products.

FEATURES

(1) Photo-catalyst whitening system

By incorporating a revolutionary titanium dioxide photocatalyst formulation, GC TiON achieves a significantly superior and more efficient whitening effect. Light activates the GC TiON photocatalyst maximizing the whitening effect of the hydrogen peroxide. Because of this whitening efficiency, GC TiON uses a lower concentration of hydrogen peroxide thereby lowering patient sensitivity and increasing safety.

GC TiON Whitening Gel is designed for better handling properties and safety. It can be placed on tooth surfaces easily without slumping, minimizing the risk of accidentally contacting gingiva and/or lips.

(2) Specialized prophylaxis material for pre- and post-whitening

GC TiON Prophylaxis Paste: Specially designed fluoride-free prophylaxis paste, which enhances the effectiveness of tooth whitening.

MI Paste: Recommended for use after the in-office whitening procedure. It can help "relieve sensitivity" and "help minimize a shade relapse (rebound) after whitening."

(3) In-Office boost prior to Take Home whitening

The use of the In-Office GC TiON Whitening System as a boost prior to home whitening, may lead to a more effective whitening result.

RECOMMENDED INDICATIONS

Discoloration caused by

1. Aging (yellowish teeth).
2. Extrinsic stains caused by agents such as: coffee, tobacco, tea, and some pigment-producing bacteria (which you can not clean off with a surface polishing agent).
3. Discoloration resulting from systemic disease (not involving hypoplasia).

Note: Discoloration caused by systemic disease indicates one caused by tetracycline (degree of F1, F2) and one caused by fluoride and hematoporphyrin.

CONTRAINDICATIONS

1. Do not use on teeth with active disease.
2. Do not use on patients with Takahara's Disease (acatalasia), or during pregnancy or lactation.
3. In rare cases TiON may cause sensitivity in some people. If any such reactions are experienced, discontinue the use of the product and refer to a physician.
4. Take care to avoid ingestion of the material.
5. Do not use TiON Gingival Protector on patient of known allergy to methacrylate monomer/polymer. In the rare case sensitivity occurs, discontinue the use of TiON Gingival Protector and refer to a physician.

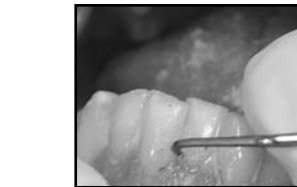
PRECAUTIONS (See additional cautions at the end of this instruction.)

1. Prior to use, dispense paste onto gauze and check viscosity/consistency.
2. Depth of cure depends on the performance of the light-curing unit. Ensure proper maintenance and that the lamp is in proper working order or light guide is not exposed to dust or dirt. Refer to manufacturers' directions.
3. Do not wash the applicator tip with alcohol based products. Alcohol could come back into the syringe through applicator tip and discolor the paste.
4. Patient, and dental professionals should wear protective eyeglasses as recommended by curing/bleaching light manufacturer.
5. Slowly push plunger of syringe. In the event of resistance, the paste may be hardened inside. Remove applicator tip and bleed syringe before replacing tip. Dispense directly from syringe to remove blockage of hardened material.

DIRECTIONS FOR USE

1) CLEANING TOOTH SURFACE

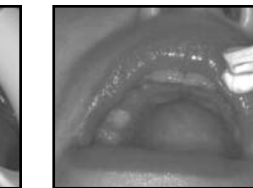
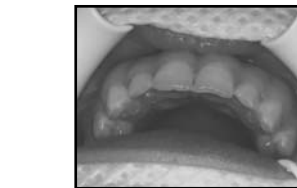
Prior to GC TiON whitening, clean the tooth surface with GC TiON Prophylaxis Paste. Note: When performing prophylaxis, do not exceed 5000 RPM.



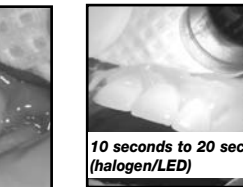
2) PROTECTION

Using a mouth prop, cotton rolls and facial drape, prevent contact of the whitening gel with skin and lips. Place Gingival Protector in the cervical area to be whitened.

- a. Use mouth prop if necessary.
- b. It is suggested to apply petroleum jelly to the patient's lips to prevent the lips from drying out or being exposed to UV light.

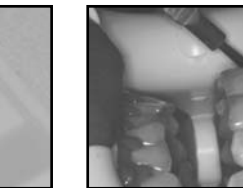


- c. Place cotton rolls to protect patient's lips from contact with whitening gel.
- d. Apply TiON Gingival Protector.
 - Dry the tooth surface to be whitened with air.
 - Apply GC TiON Gingival Protector in 1-2mm thickness covering 4-5mm apically from the gingival margin. Place 0.5mm on the tooth surface adjacent to the gingival margin.
 - After application, irradiate GC TiON Gingival Protector with curing light unit (400-500nm).



3) APPLICATION OF REACTOR

It is **important** to shake the Reactor bottle thoroughly prior to use. The Reactor should be milky white in appearance. If the Reactor bottle is not sufficiently shaken, the Reactor will not function properly. The Reactor needs to be shaken



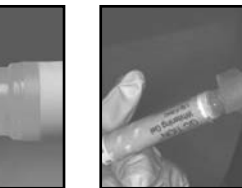
before every use; it only takes 15 minutes for the Reactor solvent to separate. Place 5 drops into the dispensing dish. Using a disposable tip brush, apply one thin layer of Reactor to the surface to be whitened. Blow the agent with an air syringe to remove excess. Cover well to avoid evaporation in case of additional applications.

Note: Handle Reactor with care as it is volatile. Place cap immediately on Reactor bottle. It is not necessary to apply repeatedly to achieve a thick layer. Upon air-drying, the surface gloss is lost.

4) MIXING OF WHITENING GEL

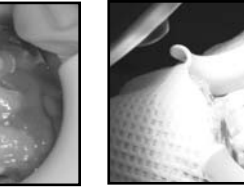
Firmly connect (clockwise) the opening of the GC TiON Whitening Liquid syringe to the Whitening Gel syringe and inject all the Gel into the Liquid syringe. Then, inject all of the mixture back into the Gel syringe in the reverse manner. Repeat this 20 times to complete mixing. End with all mixed material in the Whitening Gel syringe. Install flocked syringe tip.

Note: Mixed whitening gel can be used for up to two weeks if refrigerated.



5) APPLICATION

1. To get a feel for GC TiON Whitening Gel viscosity, dispense small amount onto gauze or mixing pad.
2. Apply whitening gel in a 0.5mm - 1.0mm thickness on all teeth to be whitened.



6) IRRADIATION

Irradiation can be accomplished with a curing light or whitening/bleaching light unit.

Irradiation with whitening/bleaching light (UV), follow light manufacturer's instruction for suggested length of time for each bleaching cycle. It is recommended to use 1 to 3 bleaching cycles. In most cases optimal results will be achieved within 3 cycles.

Irradiation with an operatory light curing unit, one minute per tooth. It is suggested to place the light source as close as possible to the tooth surface.

Note: When using a curing light (VLC), a wavelength of 380 - 500nm is recommended. A better effect can be achieved using a device which has strong light intensity with a peak of 380nm.

7) REMOVAL OF IN OFFICE WHITENING GEL

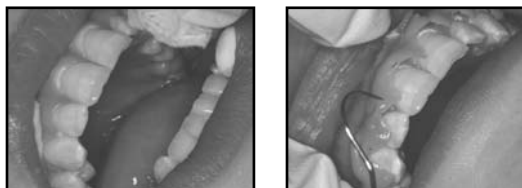
- a. Remove whitening gel using gauze. Wipe off gel from cervical to edge.

Note: When wiping off gel during multiple whitening applications, do not rinse with water as GC TiON Gingival Protector may come off.

For severe/challenging discoloration:

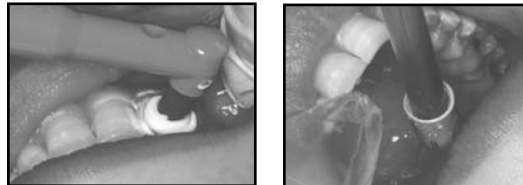
The In Office whitening procedure can be repeated sequentially up to a maximum of 3 applications. Remove whitening gel with gauze. **Repeat steps 3 through 7 of the procedure commencing from GC TiON Reactor application through removal of Whitening Gel.** If using the GC TiON Take Home whitening application afterwards, once is enough to obtain an adequate result.

- b. Remove mouth prop, cotton roll and GC TiON Gingival Protector from the mouth.



8) TOOTH TREATMENT AFTER WHITENING

Apply MI Paste immediately after treatment with prophy cup, finger, or tray to help relieve any post bleaching sensitivity, minimize shade relapse and buffer against plaque acid. For maximum effectiveness, allow MI Paste to remain on the patient's teeth at least 3-5 minutes before rinsing.



OTHER PRECAUTIONS:

1. Confirm gingival and oral conditions of patient prior to beginning whitening treatment.
2. As this material contains hydrogen peroxide, it is highly irritating and can cause sensitivity to oral tissues. Gel in contact with soft tissue will result in soft tissue burning (white). To avoid contact, wear gloves. Eye protection should be worn. Take care not to let the material contaminate clothing or other devices. In case of contact with skin, wipe off immediately with gauze and flush with water. In case of contact with eye, flush immediately with plenty of water and seek medical attention.

3. Temporary prostheses made of methyl methacrylate may discolor or turn red, unlike composite and polycarbonate materials which do not discolor.
4. Prior to treatment, inform patients that acrylic, porcelain, and composite cannot be whitened by whitening treatment.
5. Possibility exists for whitening procedure to be ineffective in certain enamel conditions.

SENSITIVITY:

1. If exposure of cementum or dentin can be observed, restore with composite resin or cover the exposed portion with a BIS-GMA-free transparent resin using a dentin bonding agent, prior to whitening.
2. In case of patient pain or discomfort, discontinue use and flush teeth thoroughly with water. Identify the sore area, provide appropriate treatment and then restart the whitening treatment.
3. Some patients may have sensitivity with their teeth or gingiva during treatment. Sensitivity will cease in approximately 1-3 days after whitening treatment is discontinued.
4. Use of MI Paste is recommended for management of tooth sensitivity.
5. If sensitivity continues whitening treatment should be discontinued.

CAUTIONS:

1. Do not use anesthesia for whitening treatment.
2. Take special care that the patient should not swallow prepared whitening gel, reactor material or gingival protector.
3. Wear protective glasses, etc. during whitening treatment and light curing (patient and dental professional). Do not look directly into the light emitted through the light guide. Refer to light manufacturer's instructions.
4. Wear protective gloves when applying the Gingival Protector to avoid direct or prolonged contact with uncured material in order to prevent possible sensitivity. Do not leave uncured material on the skin. In case of contact, remove immediately with cotton or sponge soaked in alcohol and flush with water. If Gingival Protector comes in contact with eyes, flush immediately with water and seek medical attention. Avoid getting the Gingival Protector on clothing or other devices.
5. If Gingival Protector gets in contact with eyes, flush immediately with water and seek medical attention.
6. In case Reactor or mixed whitening gel comes in contact with skin, wipe off immediately with gauze and flush with plenty of water.
7. The Reactor is volatile. Keep away from sources of ignition and direct sunlight.
8. MI Paste contains ingredients derived from milk casein. It is contraindicated for patients with milk protein allergies.

9. Do not use MI Paste on patients with hydroxybenzoates allergy. If any angioedema symptoms are experienced, discontinue the use of the product and refer to a physician.
10. Instruct the patient not to smoke, drink or eat foods that could lead to discoloration (for 48 hours).
11. Use as soon as possible after opening (2 weeks when refrigerated).
12. This product is for use only by a dental professional.

STORAGE:

1. Separate the two boxes and store the smaller box containing the Whitening Gel and Liquid in the refrigerator.
2. **Store the Whitening Gel and Liquid in refrigerator (2-8°C / 35.6-46.4°F).**
3. The larger box **DOES NOT** require refrigeration.
4. Shelf life 18 months.
5. Avoid exposing the Gingival Protector to direct sunlight.

GC AMERICA INC.
3737 West 127th St.
Alsip, Illinois 60803 U.S.A.
1-800-323-7063
www.gcamerica.com

Printed in U.S.A.

GC TiON™ TOOTH WHITENING SYSTEM In Office

Instructions for Use

Refrigeration Required for
Whitening Gel and Liquid

Prior to use, carefully read and
understand these instructions.

GC®
GC AMERICA INC.

1240808