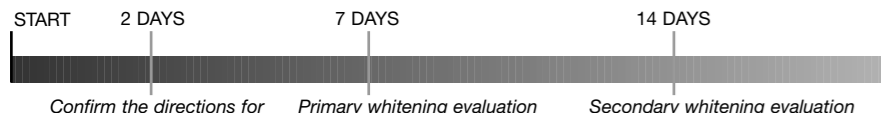


During this period of time it is advised that he or she refrain from eating or drinking foods that may lead to discoloration.

Arrange with patient for consultations to evaluate how the treatment is proceeding on the 2nd, 7th, and 14th day from the first treatment.

The standard period of completion of treatment can be judged by checking at every 7 days. Maximum whitening effect is noticed approximately 7–10 days following prescribed use.

Patient Follow Up and Consultation Timeline



PRECAUTIONS:

1. Prior to treatment, carefully read the instruction for use, cautions, MSDS. Use only in the recommended indications.
2. Prior to treatment, inform patients that acrylics, porcelain, and composite cannot be whitened by whitening treatment.
3. Possibility exists for whitening to be ineffective for certain enamel conditions.
4. MI Paste contains ingredients derived from milk casein. Do not use on patients with a milk protein allergy. MI Paste is lactose free.
5. Temporary prostheses made of methyl-methacrylate may discolor or turn red.

PRECAUTIONS (Continued):

6. Do not use TiON Take Home on patients allergic to hydrogen peroxide.
7. Do not use MI Paste on patients with hydroxybenzoates allergy. If any angioedema symptoms are experienced, discontinue the use of the product and refer to a physician.

SENSITIVITY:

1. **In case of patient pain or discomfort,** discontinue the use of the product and flush teeth thoroughly with water. Identify the sore area, provide appropriate treatment and then restart the whitening treatment.
2. **Some patients may have sensitivity** with their teeth or gingiva during treatment. Advise patient to discontinue the use of the product and consult dentist. In normal instances sensitivity will cease in approximately 1–3 days after whitening treatment is discontinued.
3. **In case of gingival sensitivity**
 - a) Check the margin of the whitening tray, and make sure that the edge of tray is not too close or does not contact the gingival.
 - b) The patient may have placed too much whitening gel. Demonstrate again how the tray is filled and restart treatment. Instruct the patient to remove excess gel with the finger or a dry toothbrush.

4. In case of tooth sensitivity

If exposure of cementum or dentin can be observed, restore with composite resin or cover the exposed portion with a BIS-GMA-free transparent resin using a dentin bonding agent, then start the whitening treatment.

5. In case of continued sensitivity
 - a) If the cause of the sensitivity cannot be verified, treatment should be discontinued. When the discomfort disappears, restart the treatment.
 - b) MI Paste is recommended for the management of tooth sensitivity, especially after bleaching.
 - c) **Recommend MI Paste to the patient.** Advise the patient that it is important to clean the whitening tray thoroughly every time gel is applied to the tray. (If the gel coated tray is soaked in water, gel can be removed easily.)
 - d) If you cannot relieve the patient's sensitivity using any of the above ways, treatment should be discontinued.

CAUTION:
U.S. Federal law restricts this device to sale by or on the order of a dentist.

STORAGE:
Keep refrigerated (2-8°C / 35.6-46.4°F).



GC AMERICA INC.
3737 West 127th St.
ALSIP, IL 60803 U.S.A.

1-800-323-7063

Printed in U.S.A.
© 2007 GC America Inc.

*VITA is a trademark of Vita Zahnfabrik

GC TiON™ TOOTH WHITENING SYSTEM Take Home

Instructions for Dental Professional
Refrigeration Required

Prior to use, carefully read and understand these instructions.



GC AMERICA INC.

1260307

GC TiON Whitening System - Take Home

GC TiON Take Home is an effective home whitening agent developed to maintain the natural tooth translucency. TiON custom tray material is designed to offer flexibility, durability, and comfort; allowing maximum contact with the tooth surface and minimizing leakage. Patients are instructed to use GC TiON (Take Home) for 2–10 hours a day for approximately 7 to 10 days.

Features

1. Specialized prophylaxis materials for pre- and post whitening.

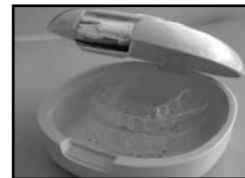
- (1) GC TiON Prophy Paste: This specially designed non-fluoride prophylaxis paste (coarse) is used to prepare tooth in order to enhance the effectiveness of tooth whitening.
- (2) MI Paste™: MI Paste is recommended for use daily following whitening. MI Paste may help “relieve sensitivity during at-home whitening” and help to “revitalize bleached surfaces”.

2. Whitening gel is effective with little or no sensitivity.

GC TiON's unique thickener, allows the Whitening Gel to sit firmly on the teeth, resulting in a high whitening effect. GC TiON contains potassium nitrate and fluoride to help aid in desensitizing.

3. Special tray material used to enhance the effectiveness of whitening.

GC TiON's tray material is made of polyolefin-polystyrene copolymer, providing flexibility and high tear resistance which results in less deformation against stress. Therefore the custom trays maintain form during use, maximizing the effect of GC TiON Whitening Gel and MI Paste and minimizing leakage.



GC Tray Material thicker & flexible

RECOMMENDED INDICATIONS

Discoloration caused by

1. Aging (yellowish teeth)
2. Coffee, tobacco, tea and etc. (which you can not clean off with surface polishing agent)
3. Results of pigment-producing bacteria (which you can not clean off with surface polishing agent).
4. Discoloration resulting from systemic disease (not including hypoplasia).

Note: Discoloration caused by systemic disease indicates one caused by tetracycline (degree of F1, F2) and one caused by fluoride and hematoporphyrin.

CONTRAINDICATIONS

1. Do not use on teeth with active disease.
2. Do not use on patients with Takahara's disease (acatalasia), during pregnancy or lactation.
3. In rare cases GC TiON may cause sensitivity in some people. If any such reactions are experienced, discontinue the use of the product and refer to a physician.
4. Take care to avoid ingestion of the material.

DIRECTIONS FOR USE

1) Pre-treatment record

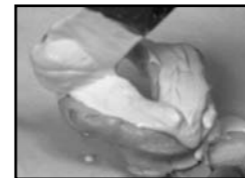
Record the original shade of the patient's tooth using the enclosed shade guide or a Vita® Classical shade guide.



2) Fabrication of stone model

The success of take home whitening depends on the precise fit of the tray. Follow these steps for the fabrication of a stone model.

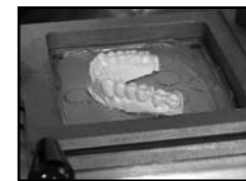
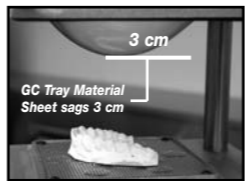
- a. Take an impression.
- b. Pour the impression with dental stone and wait for set.



- c. Cut off the base of the model 3 – 4 mm away from the cervical area. Remove the palate or make a hole in it for vacuum suction.

3) Vacuum formation of tray

Using a vacuum former, heat the tray sheet until the center sags 3 cm in depth (Approx. time is 1 minute 30 seconds after the heater starts to get red and hot). Immediately pull down the tray material on the model and proceed to the step of suction. For details, refer to the instructions for use of the vacuum former being used.

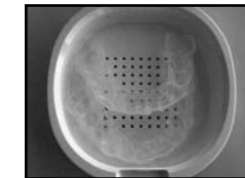
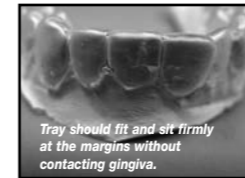


4) Adjustment of the tray

Following cooling, trim excess tray material. Trim tray material 0.5 mm short of the gingival margin using a knife or scissors. Avoid contact of the tray material with the gingival margin.



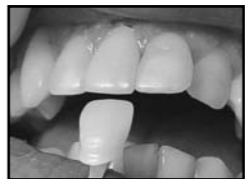
- 5) Leave the tray on the model until given to the patient. Clean the tray with soap and cold water and place it in the tray case.



Tray should fit and sit firmly at the margins without contacting gingiva.

Patient instructions on seating of the tray

1. Review take-home whitening instructions with the patient and demonstrate how tray can be inserted and properly seated.



Please review the patient guide instructions with your patient.

2. The standard amount of at-home whitening gel to be applied is the amount to adequately cover the tooth surface. Seat the tray with gel slowly in the mouth, allowing the gel to spread onto the facial surface of each tooth. Patient should wear the tray for 2-10 hours. The whitening gels included in this kit allow for approximately 14 single tray applications.



3. Two or three days post whitening, please check with the patient to see how the treatment is proceeding. Generally it takes approximately 7–10 days to finish the at-home whitening. It is necessary to have the patient visit you at that time. Advise the patient that 2 to 4 weeks following completion of whitening protocol the teeth undergo natural color rebalancing. Record final shade using shade guide.