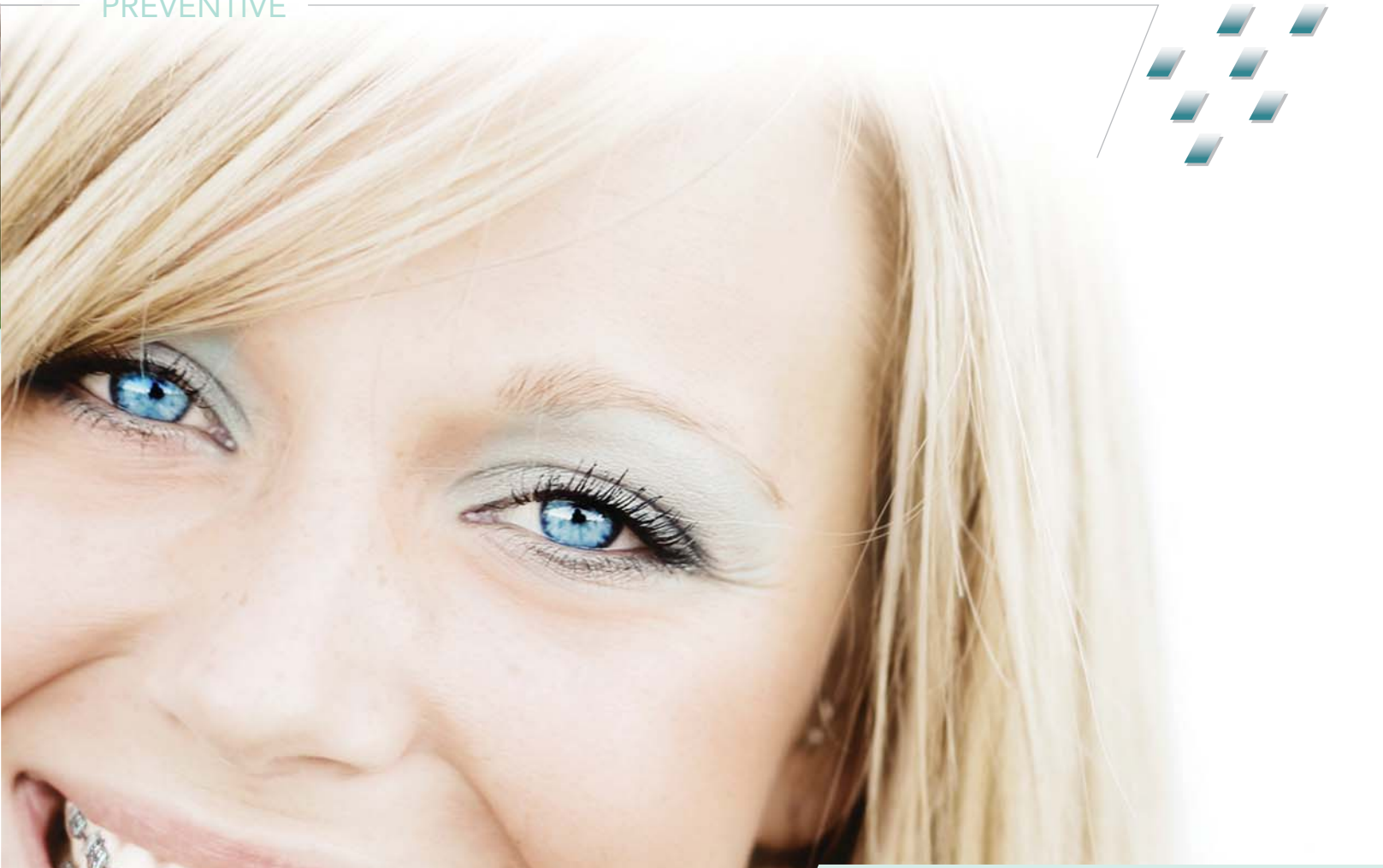


MI Paste™

Professionally Specified Tooth
Treatment Delivering Bio-Available
Calcium and Phosphate



"Since I incorporated MI Paste into my practice, I have noticed a dramatic decrease in white spots and a considerable improvement in lesion reversal. I am so passionate about the use of MI Paste, I now prescribe MI Paste for most of my patients as a preventive measure."

Michael Florman, DDS, ABO
Orthodontist, Private Practice
Santa Monica, CA



GC America has a full line of bracket and bonding products plus alginate for your orthodontic practice.

002265 MI Paste 10-Pack

Contains: 10 Tubes of MI Paste (40g each), two tubes of each flavor (melon, mint, strawberry, tutti frutti and vanilla).

439451 Fuji ORTHO™ LC Capsule Starter Kit for Bracket Bonding

Contains: 50 Capsules (0.33g powder and 0.085ml liquid per capsule) of Light-Cured Fuji ORTHO LC Resin Reinforced Glass Ionomer Cement, 25g bottle of GC ORTHO Conditioner and Capsule applicator.

439450 Fuji ORTHO™ LC 50-Capsule Package

439401 Fuji ORTHO™ LC Powder-Liquid Introductory Kit for Bracket Bonding

Contains: One 15g powder, one 6.8ml bottle of liquid, mixing pad and scoop.

439403 Fuji ORTHO™ LC Powder-Liquid Standard Package

Contains: One 40g powder, two 6.8ml bottles of liquid, mixing pad and scoop.

439503 Fuji ORTHO™ Self-Cure Powder-Liquid Standard Package for Bracket Bonding

Contains: One 40g powder, two 6.8ml bottles of liquid, mixing pad and scoop.

439460 GC Fuji ORTHO™ BAND Paste Pak Starter Kit

Contains: Two Fuji ORTHO BAND Paste Pak cartridges, one mixing pad, one Paste Pak dispenser and mixing spatula.

001888 GC Fuji ORTHO™ BAND Paste Pak Refill

Contains: Two 13.3g (7.2ml) Paste Pak Cartridges of Fuji ORTHO BAND and mixing pad.

120001 COE Alginate™ Normal Set Mint Flavor, 1 lb. Package

120101 COE Alginate™ Fast Set Mint Flavor, 1 lb. Package

121001 COE Alginate™ Normal Set Wild Cherry Flavor, 1 lb. Package

121101 COE Alginate™ Fast Set Wild Cherry Flavor, 1 lb. Package

120005 COE Alginate™ Normal Set Mint Flavor, 5 lb. Package

120025 COE Alginate™ Normal Set Mint Flavor, 25 lb. Package (Five, 5 lb. Bags)

124101 COE Hydrophilic Gel™ (CHG) Fast Set Cherry Flavor, 1 lb. Package

124001 COE Hydrophilic Gel™ (CHG) Normal Set Cherry Flavor, 1 lb. Package

124125 COE Hydrophilic Gel™ (CHG) Fast Set Cherry Flavor, 25 lb. Package (Five, 5 lb. Bags)

900200 SALIVA-CHECK™ Buffer Kit In vitro test for pH and saliva buffering capacity



A
breakthrough
to keep
your patients
smiling

MI Paste™ with RECALDENT™ (CPP-ACP) Helps
Prevent and Repair White Spot Lesions

GC
GC America Inc.

3737 West 127th Street
Alsip, IL 60803
1-800-323-7063
www.gcamerica.com



RECALDENT™ (CPP-ACP) is a trademark of Recaldent Pty. Ltd. RECALDENT™ (CPP-ACP) is milk derived and, therefore, not recommended for patients with milk allergies. RECALDENT™ (CPP-ACP) is digestible by patients with lactose intolerance. Do not use on patients with a milk protein and/or hydroxybenzoates allergy.

© 2006 GC America Inc.
SKU 610026

GC



Helping you create the perfect smile

As you know, wearing braces can make it more difficult for your patients to keep their teeth clean. Food can become trapped around orthodontic brackets and wires, causing plaque to build up over time — potentially leading to tooth decay. GC America has the answer.

MI Paste™ is the first product for professional use to contain the active ingredient RECALDENT™ (CPP-ACP), a special milk-derived peptide that helps prevent and repair white spots (sub-surface lesions) during orthodontic treatment by delivering calcium and phosphate ions into the tooth structure.

The perfect complement for any orthodontic practice

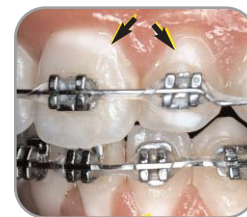
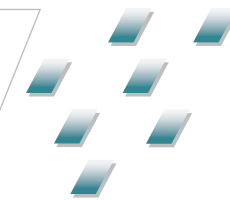


Photo courtesy of Prof. L. Walsh

MI Paste with RECALDENT™ (CPP-ACP) prevents the formation of white spot lesions.

Prevention

Applications of MI Paste™ with RECALDENT™ (CPP-ACP) twice a day throughout the full course of orthodontic treatment can help:

- Prevent white spot lesions from occurring
- Buffer acids produced by bacteria and plaque
- Strengthen enamel, making it more resistant to white spot lesions



Post-orthodontic decalcification



After one week using MI Paste

Photos courtesy of Prof. L. Walsh

Post-Orthodontic

In addition to remineralization of white spots, MI Paste with RECALDENT™ (CPP-ACP) offers the perfect finishing treatment to optimize the appearance of enamel. If applied regularly, MI Paste will help increase the reflectivity of the enamel surface.

The science behind the smile

Extensively researched since the 1980s, RECALDENT™ technology, featuring casein phosphopeptide amorphous calcium phosphate (CPP-ACP), has proven to bind readily to pellicle, plaque, soft tissue and even hydroxyapatite when applied within the oral cavity.¹ This helps maintain a state of supersaturation of calcium and phosphate at the tooth surface, which depresses demineralization and enhances remineralization.



Before



1000 ppm F⁻



2.0% CPP-ACP

Photos courtesy of Dr. E.C. Reynolds

Further research has proven the effectiveness of RECALDENT™ (CPP-ACP) in preventing and reversing early caries lesions often seen as white spots.²



Application

MI Paste is water-based, sugar-free, fluoride-free and safe enough for multiple applications during the day. After an initial application during orthodontic treatment, MI Paste can be applied by the patient using a custom tray, cotton swab or clean

finger. Patients with fixed brackets may require the use of a small interproximal or orthodontic brush. Although applying MI Paste with RECALDENT™ (CPP-ACP) after meals or snacks helps neutralize acid challenges, nightly application for 3-5 minutes is best for preventing white spots.



¹Remineralization of enamel subsurface lesions by casein phosphopeptide-stabilized calcium phosphate solutions. Reynolds EC. J. Dent Res. 1997;76:1587-1595.; Reynolds EC. Anticariogenic complexes of amorphous calcium phosphate stabilized by casein phosphopeptides: A review. Spec Care Dentist 1998; 8: 8-16.; Reynolds EC, Black CL, Cai F, Cross KJ, Eakins D, Huq NL, Morgan MV, Nowicki A, Perich JW, Riley PF, Shen P, Talbo G, Webber FW. Advances in enamel remineralization: Anticariogenic casein phosphopeptide - amorphous calcium phosphate. J Clin Dent 1999; 10: 86-88.; Reynolds EC, Cai F, Shen P, Walker GD. Retention in plaque and remineralization of enamel lesions by various forms of calcium in a mouthrinse or sugar-free chewing gum. J Dent Res 2003; 82: 206-211.
²Anticariogenicity of tryptic casein- and synthetic-phosphopeptides in the rat. Reynolds EC, Cain CJ, Webber FL, Black CL, Riley PF, et al. J dent Res. 1995;74:1272-1279.