



Restorations that cross generations



EQUIA Forte[®] HT
Bulk fill glass hybrid
restorative system



Since 1921
Towards Century of Health

Restorations for all generations

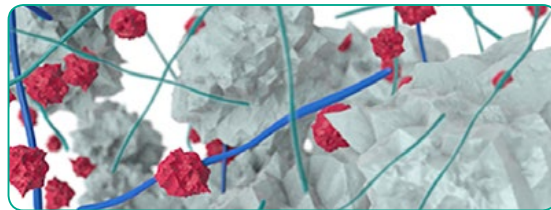
Building on the success of EQUIA Forte®, the new EQUIA Forte® HT is a long-term bulk fill restorative system with enhanced mechanical properties, superior fluoride release, sound marginal seal and excellent handling. This makes EQUIA Forte® HT a versatile and durable restorative solution, ideal for patients of all ages, including pediatric, geriatric and high-risk caries patients.

Glass hybrid technology

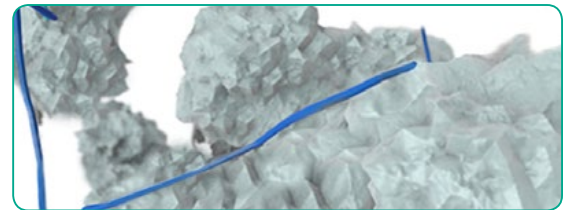
EQUIA® was first launched in 2007, and numerous clinical studies have demonstrated its clinical efficacy in Class I and II restorations* ever since. In 2014, GC's new glass hybrid technology caused further considerable improvements, leading to the development of EQUIA Forte®. This restorative system combined a self-cure, bulk fill restorative, EQUIA Forte® Fil, laminated with a nano-filled, self-adhesive resin coat, EQUIA Forte® Coat. The new glass hybrid innovation was achieved through introduction of ultra-fine highly reactive glass and high-molecular weight polyacrylic acid powders within conventional glass which ensures advanced mechanical properties with improved flow and non-sticky handling. The nano-filled, self-adhesive resin, EQUIA Forte® Coat, ensures optimized marginal seal and wear resistance.

*See technique guide for suggested cavity preparations.

- Surface-treated FAS (Fluoro Aluminosilicate) glass
- Highly reactive surface-treated fine FAS glass
- High-molecular-weight polyacrylic acid
- Polyacrylic acid



EQUIA Forte® Fil and EQUIA Forte® HT Fil advanced glass hybrid technology



EQUIA® Fil

Taking glass hybrid to the next level

The strength and handling are further improved in EQUIA Forte® HT by developing an intelligent control of distribution and interaction of these glass particles. Also, EQUIA Forte® Coat is now available in an ergonomic flip-top bottle that minimizes waste.

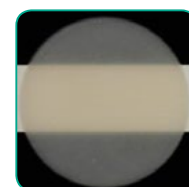
The result? A strong restorative with prolonged working time and superb handling that is excellent for bulk-fill placement, even in load-bearing Class II restorations.*

*See technique guide for suggested cavity preparations.

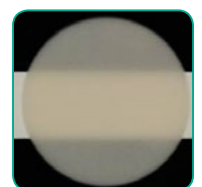


Improved translucency

Pushing the boundaries of glass hybrid technology even further, EQUIA Forte® HT has a perfectly adapted translucency for better looking posterior restorations. The refractive index of the fillers has been adapted to the matrix. As a result, the final restorations look more natural and aesthetic⁷.



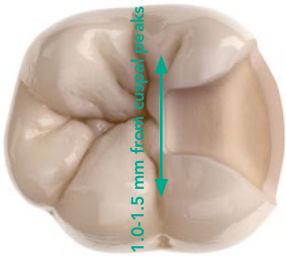
EQUIA Forte® HT Fil
Shade A2



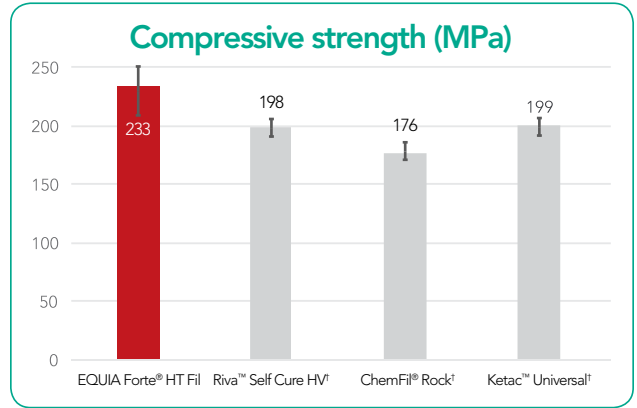
EQUIA Forte® Fil
Shade A2

Strong & durable

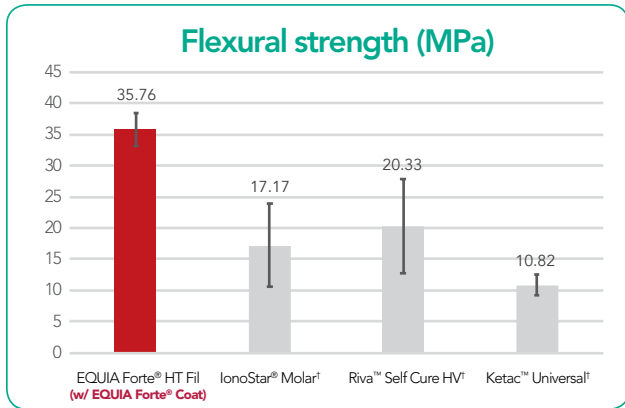
Glass hybrid systems offer the strength of the latest innovative glasses combined with the wear resistance of a filled coating. The unique synergy between the coating and the restorative material improves the durability and wear resistance of the restorations.⁴



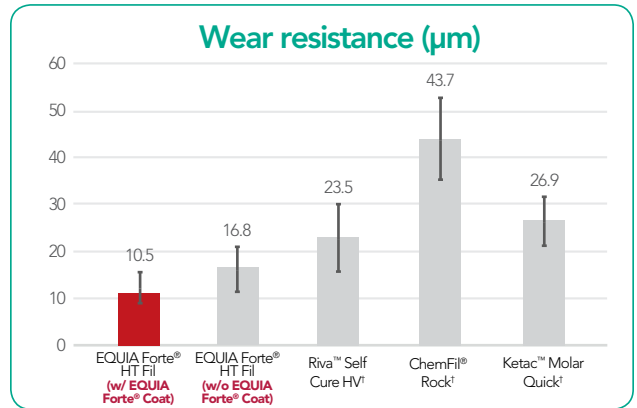
EQUIA Forte® HT is indicated for stress-bearing Class II cavities*.



ISO9917-1: 2007. Source: GC R&D, Japan, 2018. Data on file.



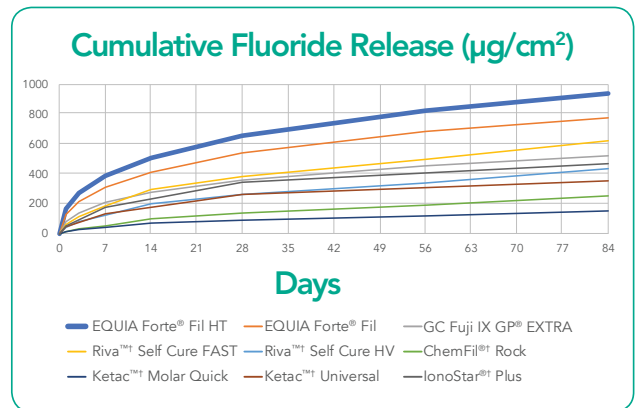
Three-point bending test (ISO10477:2004). Source: University of Siena, Italy. Publication in preparation.



Source: GC R&D, Japan, 2018. Data on file.

Superior fluoride release

EQUIA Forte® HT exhibits not only high but prolonged fluoride release. As seen in the graph, EQUIA Forte® HT provides superior fluoride release than that of many restoratives. This class of restoratives can be used in conjunction with MI Paste Plus® and MI Paste® ONE to recharge fluoride content⁸.



Source: GC R&D, Japan, 2018. Data on file. †Ketac™ is a trademark of 3M. Riva™ is a trademark of SDI Limited. ChemFil® Rock is a registered trademark of Dentsply Sirona. IonoStar® Plus is a registered trademark of VOCCO GmbH.

Excellent biocompatibility & biomimetic properties

EQUIA Forte® HT exhibits a strong chemical bond to tooth providing exceptional marginal seal. The isolation is not needed as the bond strength is not compromised even in presence of saliva. Since no etchant is used, there is virtually no post-operative sensitivity. Due to its hydrophilic nature and similar coefficient of thermal expansion to dentin, it is an excellent biomimetic material. It is not only a tooth-friendly option but also an environment-friendly solution, making it a great choice for multiple clinical situations including as an amalgam alternative.

Fast & easy placement

EQUIA Forte® HT has been designed to make your daily restorative work as light and efficient as possible. Since rubber dam placement and adhesive application are obsolete, the restoration can be finished in no time. It is a material that is easy to use, yet the longevity is not compromised.

0'00"	0'10"	1'30"	2'30"	3'00"	3'05"	3'25"
						
Place True bulk-fill technique Convenient capsule delivery	Shape Prolonged working time Easy to contour Non -sticky	Finish Set after 2'30"	Coat Glossy surface without polishing with increased wear resistance and exceptional marginal seal	Light-cure Finished in just 3'25"		

EQUIA Forte® HT, your best partner for posterior restorations



Courtesy of Dr. Z Bilge Kütük, Turkey



Main indications for EQUIA Forte® HT

Long-term proven clinical performance

EQUIA Forte® HT is a reliable system based on 12 years of clinical experience with EQUIA®.

The longevity of posterior EQUIA® restorations has been proven in many independent, long-term clinical studies¹⁻⁵ showing after 6 years a success rate of 100% for Class I restorations²⁻³ and between 92.3% and 98.7% for Class II^{1-3,9}.

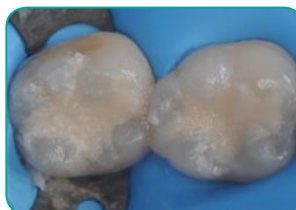
- Gurgan *et al.* A randomized controlled 10 years follow up of a glass ionomer restorative material in class I and class II cavities, J Dent. 2019 Jul 25. pii: S0300-5712(19)30157-5.
- Gurgan *et al.* Clinical performance of a glass ionomer restorative system: a 6-year evaluation. Clin Oral Investig. 2017;21(7):2335-2343.
EQUIA® vs. composite
- Türkün *et al.* A Prospective Six-Year Clinical Study Evaluating Reinforced Glass Ionomer Cements with Resin Coating on Posterior Teeth: Quo Vadis? Oper Dent. 2016;41(6):587-598
EQUIA® vs. Riva™ Self Cure†
- Basso *et al.* 7 Years, Multicentre, Clinical Evaluation on 154 Permanent Restorations Made With a Glassionomer-based Restorative System. J Dent Res. 2016;95 Spec Issue B: #0446.
- Klinke T. *et al.* Clinical performance during 48 months of two current glass ionomer restorative systems with coatings: a randomized clinical trial in the field. Trials. 2016;17(1):239. doi: 10.1186/s13063-016-1339-8.
EQUIA® vs. glass ionomer with conventional coating
- Gurgan *et al.* 12-month Clinical-performance of a Glass-hybrid-restorative in Non-caries-cervical-lesions of Patients With Bruxism. J Dent Res. 2018; 97 Spec Issue A: #0235. **EQUIA Forte® vs. composite**
- Shimada *et al.* Evaluation of Mechanical Properties of New GI-restorative (EQUIA Forte® HT). J Dent Res. 2019; 98 Spec Issue A: #3662.
- Y. Hokii *et al.* Fluoride Ion Release/Recharge Behavior of Ion-Releasing Restorative Materials, Dental Materials, Volume 35, Supplement 1, 2019 (Accepted for publication).
- Literature review, presented at IADR 2019 by Prof Soraya Coelho Leal.

Clinical cases

A strong & biomimetic amalgam alternative

The material can be placed in bulk and is easy to pack & contour. It takes only 3'25" to complete your restorations!*

*Assuming average procedure times following the instructions for use.



Courtesy of Dr. Victor Cedillo Felix, San Diego, CA.

Restoration of a posterior tooth in a high risk caries patient

The moisture tolerant adhesion of EQUIA Forte® HT enables easy restoration of deep cavities, even when a rubber dam cannot be placed. The use of sectional matrix will contribute to the longevity of the restorations.



Courtesy of Dr. Z Bilge Kütük, Turkey

Restoration of sensitive, hypomineralized MIH teeth

The chemical adhesion of the material – even to untreated dentine - offers a more sustainable solution in situations where bonding is compromised. The material can be easily placed after partial manual caries removal, making it easier to use in hypersensitive patients or patients having molar incisor hypoplasia (MIH).



Courtesy of Dr. P. Rouas, France

EQUIA Forte® HT Intro Kit

Contains: 48 EQUIA Forte® HT Capsules (Powder 0.4g, Liquid: 0.13g (0.10mL) per capsule), one EQUIA Forte® Coat (4mL) bottle, 1 CAVITY CONDITIONER (GC) (5.7mL).

453001 A1 HT 453002 A2 HT 453003 A3 HT 453004 A3.5 HT
453006 B1 HT 453007 B2 HT 453008 B3 HT 453009 C4 HT
453005 Assorted

EQUIA Forte® HT Fil Refill

Contains: 48 EQUIA Forte® HT Capsules (Powder 0.4g, Liquid: 0.13g (0.10mL) per capsule).

453010 A1 HT 453011 A2 HT 453012 A3 HT 453013 A3.5 HT
453014 B1 HT 453015 B2 HT 453016 B3 HT 453017 C4 HT
453000 Assorted

452500 EQUIA Forte® Coat Bottle Refill

Contains: One EQUIA Forte® Coat (4mL) bottle.

452505 EQUIA Forte® Coat Unit Dose Refill

Contains: 50 EQUIA Forte® Coat (0.1mL each) unit doses, 50 Micro-Tip Applicators and one Applicator Holder.

000110 CAVITY CONDITIONER (GC)

Contains: One (5.7mL) bottle.

437555 GC CAPSULE APPLIER III

Contains: One capsule applier.



Scan the QR Code to learn more
about Glass Hybrid technology