

GC Fuji TEMP LT TECHNIQUE GUIDE

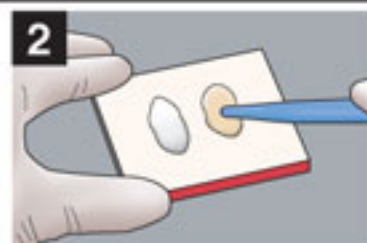


Prior to use, carefully read the instructions for use.

PLACEMENT



1 Dispense pastes on to a mixing pad.



2 First **spread yellow paste** on the mixing pad with a spatula.



3 Mix the two pastes thoroughly with lapping strokes for 10 seconds.



4 Apply a thin layer of GC Fuji TEMP LT on the internal rim of the restoration. Do not overfill.



5 Seat the restoration. Maintain moderate pressure.



6 Remove excess cement when it feels rubbery (approx. 1 min after seating.) Maintain isolation until set (3 min.)

REMOVAL TECHNIQUE



1 Using a suitable crown removal instrument, remove the restoration.



2 Residual cement can be removed with a scaler or other suitable instrument. Gently drying of cement helps to make the clean-up easier.



GC CORPORATION
TOKYO, JAPAN