



# FIND SUCCESS IN OVER 33 MILLION RESTORATIONS

**GC Fuji II LC<sup>®</sup>**

Resin-Modified Glass Ionomer Restorative

## #1 Top-Selling Glass Ionomer Restorative in the US

- Excellent translucency for outstanding esthetics restorations
- High rechargeable fluoride release with virtually no recurrent decay
- Strong chemical bond to tooth resulting in exceptional marginal seal
- 1.5 times the radiopacity of enamel (315% Al)

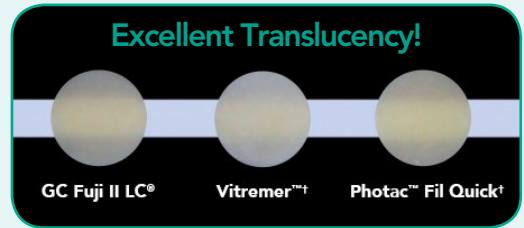
Townie Choice Award<sup>®</sup> Winner in Restorative Dentistry  
– Glass Ionomers category for last three years.





## Outstanding Physical Properties & Handling

Featuring an outstanding chemical bond to tooth structure, GC Fuji II LC<sup>®</sup>'s high compressive, tensile and flexural strengths assure longevity and integrity. Its consistency makes it easy to place and contour. And, like all GC glass ionomers, it works perfectly in a moist field.



| Indication      |         |          |           |         |                |                  |
|-----------------|---------|----------|-----------|---------|----------------|------------------|
|                 | Class I | Class II | Class III | Class V | Base/<br>Liner | Core<br>Build-up |
| Primary teeth   | ✓       | ✓        | ✓         | ✓       | ✓              | ✓                |
| Permanent teeth |         |          | ✓         | ✓       | ✓              | ✓                |

## Closed Sandwich Technique Using GC Fuji II LC<sup>®</sup>



Class II preparation with shallow supragingival box. CAVITY CONDITIONER (GC) is recommended to remove the smear layer.



Placement of GC Fuji II LC<sup>®</sup> occlusally.



Light-curing of GC Fuji II LC<sup>®</sup>.



Apply G-Premio BOND<sup>™</sup>, then place G-aenial Sculpt<sup>®</sup> composite, followed by light-curing.



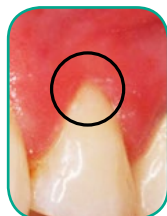
Final, esthetic glass ionomer and composite sandwich technique restoration.

## Class V Restorations using GC Fuji II LC<sup>®</sup>



Before

Photos courtesy of Dr. Robert Margeas, Des Moines, Iowa



After



Before

Photos courtesy of Dr. John Corni, Ithaca, New York



After



### GC Fuji II LC<sup>®</sup> Capsule Refills (US)

Contains: 48 capsules.

425001 A1 425002 A2 425003 A3 425004 A3.5 425005 A4  
425006 B2 425007 B3 425008 B4 425009 C2 425010 C4

Contains: 24 capsules.

425020 Dark Shades 425015 Light Shades

### GC Fuji II LC<sup>®</sup> 15g Powder Refills

000195 A1 000196 A2 000197 A3 000198 A3.5 000199 A4  
000200 B2 000201 B3 000202 B4 000203 C2 000204 C4

### GC Fuji II LC<sup>®</sup> Capsule Refills (Canada)

Contains: 48 capsules.

442001 A1 442002 A2 442003 A3 442004 A3.5 442005 A4  
442006 B2 442007 B3 442008 B4 442009 C2 442010 C4

Contains: 24 capsules.

442020 Dark Shades 442015 Light Shades

### 000164 GC Fuji II LC<sup>®</sup> 6.8mL Liquid Refill

### 000110 CAVITY CONDITIONER (GC)

Contains: 5.7mL liquid.

### GC Fuji II LC<sup>®</sup> 1:1 Kit

Contains: 15g powder, 6.8mL liquid, mixing pad and measuring scoop.

000184 A1 000185 A2 000186 A3 000187 A3.5  
000188 A4 000189 B2 000190 B3 000191 B4  
000192 C2 000193 C4